



TOURIST ACCOMMODATION AUSTRALIA

EMBARGO: 11.30AM (CANBERRA TIME) FRI 29 JUN 2007

C O N T E N T S

	<i>page</i>
Notes	2
Summary of findings	3
List of tables	8

ADDITIONAL INFORMATION

Explanatory notes	55
Glossary	62

I N Q U I R I E S

For further information about these and related statistics, contact the National Information and Referral Service on 1300 135 070.

NOTES

FORTHCOMING ISSUES

<i>ISSUE (Quarter)</i>	<i>RELEASE DATE</i>
June 2007	28 September 2007
September 2007	8 January 2008

.....

ABOUT THIS PUBLICATION

This publication presents results from the March quarter 2007 Survey of Tourist Accommodation (STA) for the following categories of establishments:

- licensed hotels and resorts with facilities and 5 or more rooms
 - motels, private hotels and guest houses with facilities and 5 or more rooms
 - serviced apartments with 5 or more units
 - caravan parks with 40 or more powered sites
 - holiday flats, units and houses of letting entities with 15 or more rooms or units
 - visitor hostels with 25 or more bed spaces.
-

ABBREVIATIONS

'000	thousand
\$'000	thousand dollars
AAA	Australian Automobile Association
ABS	Australian Bureau of Statistics
ACT	Australian Capital Territory
ASGC	Australian Standard Geographical Classification
cat. no.	Catalogue number
GST	goods and services tax
no.	number
NSW	New South Wales
NT	Northern Territory
qtr	quarter
Qld	Queensland
SA	South Australia
SLA	statistical local area
STA	Survey of Tourist Accommodation
Tas.	Tasmania
Vic.	Victoria
WA	Western Australia

Brian Pink
Australian Statistician

SUMMARY OF FINDINGS

SEASONALLY ADJUSTED AND TREND

*Hotels, motels and
serviced apartments with
15 or more rooms*

KEY FIGURES, Seasonally adjusted and trend—Australia

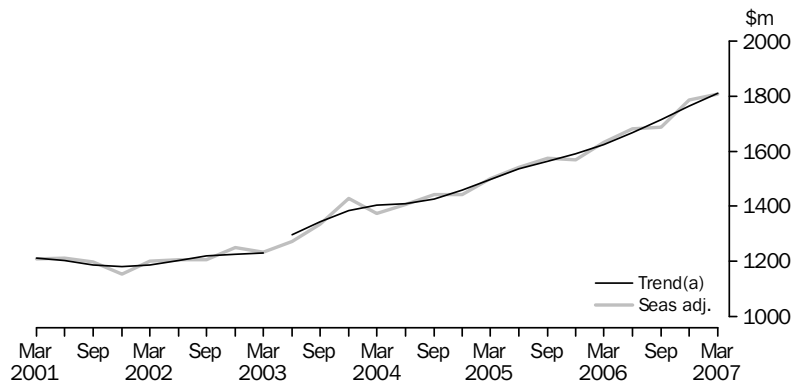
	Mar Qtr 2006	Jun Qtr 2006	Sep Qtr 2006	Dec Qtr 2006	Mar Qtr 2007
Seasonally Adjusted					
Takings from accommodation ('000)	1 632 140	1 680 990	1 685 748	1 785 694	1 806 882
Room occupancy rate (%)	64.1	64.6	63.5	65.3	66.3
Trend					
Takings from accommodation ('000)	1 624 066	1 666 448	1 714 795	1 762 980	1 808 780
Room occupancy rate (%)	63.7	64.1	64.4	65.1	65.9

ACCOMMODATION TAKINGS

The trend estimate of the total accommodation takings for hotels, motels and serviced apartments with 15 or more rooms continued to increase. In March quarter 2007, it increased by 2.6% to \$1,808.8 million compared with December quarter 2006.

In March Quarter 2007, the seasonally adjusted estimate of the total accommodation takings increased by 1.2% to \$1,806.9 million compared with December quarter 2006.

ACCOMMODATION TAKINGS, Seasonally adjusted and trend—Australia



(a) Break in time series between the March and June quarters 2003. See Explanatory Notes.

ROOM OCCUPANCY RATE

The trend estimate of the room occupancy rate for hotels, motels and serviced apartments with 15 or more rooms for the March quarter 2007 (65.9%) increased by 0.8 percentage points over the December quarter 2006.

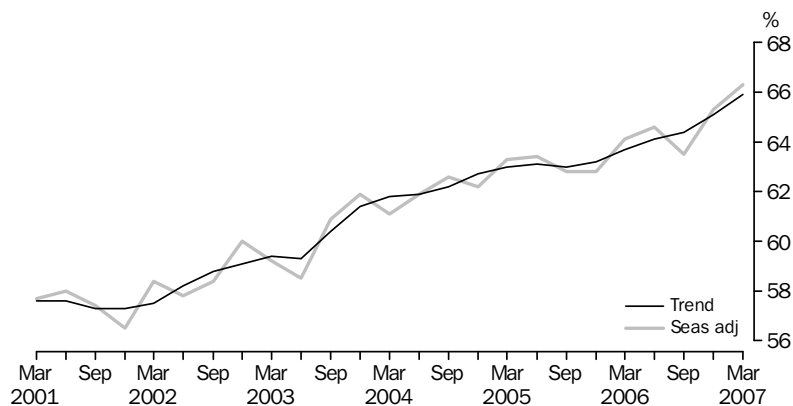
SUMMARY OF FINDINGS *continued*

Hotels, motels and serviced apartments with 15 or more rooms continued

ROOM OCCUPANCY RATE *continued*

The seasonally adjusted estimate of the room occupancy rate increased by 1.0 percentage point to 66.3% in March quarter 2007 compared to December quarter 2006.

ROOM OCCUPANCY RATE (a), Seasonally adjusted and trend—Australia



(a) Room occupancy rates are not subject to a break in series.

Seasonally adjusted and trend data are not yet available for hotels, motels and serviced apartments with 5 to 14 rooms or 5 or more rooms.

ORIGINAL

Hotels, motels and serviced apartments

The original estimates are impacted by seasonal variations and irregular or non-seasonal influences. Comparisons between quarters should be made with caution.

KEY FIGURES, Original—Australia

	March Quarter 2006	June Quarter 2006	September Quarter 2006	December Quarter 2006	March Quarter 2007
Hotels Motels and Serviced Apartments with 5 to 14 rooms					
Rooms (no.)	18 971	18 701	18 609	18 631	18 441
Room nights occupied ('000)	798.3	739.7	758.3	792.3	785.1
Takings from accommodation (\$'000)	72 685	64 684	69 022	73 934	75 437
Room occupancy rate (%)	47.3	43.9	44.4	46.7	47.9
Average takings per room night occupied (\$)	91.04	87.45	91.02	93.32	96.09
Hotels Motels and Serviced Apartments with 15 or more rooms					
Rooms (no.)	212 598	213 035	213 768	215 172	215 763
Room nights occupied ('000)	12 225.5	11 748.7	12 829.8	13 161.0	12 833.8
Takings from accommodation (\$'000)	1 649 208	1 526 511	1 740 492	1 866 614	1 832 321
Room occupancy rate (%)	64.2	60.9	65.3	66.9	66.6
Average takings per room night occupied (\$)	134.90	129.93	135.66	141.83	142.77
Hotels Motels and Serviced Apartments with 5 or more rooms					
Rooms (no.)	231 569	231 736	232 377	233 803	234 204
Room nights occupied ('000)	13 023.8	12 488.3	13 588.1	13 953.3	13 618.9
Takings from accommodation (\$'000)	1 721 893	1 591 196	1 809 514	1 940 549	1 907 758
Room occupancy rate (%)	62.8	59.5	63.7	65.3	65.1
Average takings per room night occupied (\$)	132.21	127.41	133.17	139.07	140.08

SUMMARY OF FINDINGS *continued*

Hotels, motels and serviced apartments continued

ACCOMMODATION TAKINGS

In March quarter 2007, accommodation takings for hotels, motels and serviced apartments with 5 or more rooms were \$1,907.8 million. The average takings per room night occupied for these establishments were \$140.08.

Accommodation takings for hotels, motels and serviced apartments with 15 or more rooms for March quarter 2007 were \$1,832.3 million, at an average of \$142.77 per room night occupied. For establishments with 5 to 14 rooms, accommodation takings were \$75.4 million, at an average of \$96.09 per room night occupied.

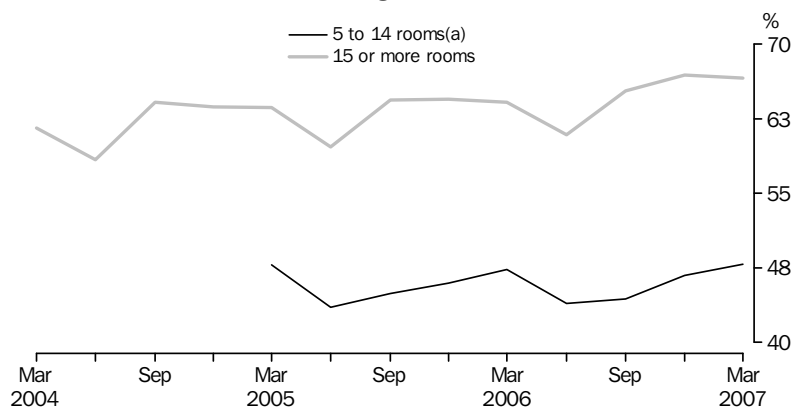
The contributions to accommodation takings in March quarter 2007 for hotels, motels and serviced apartments with 5 or more rooms were highest in New South Wales (\$642.1 million) and Queensland (\$475.0 million).

ROOM OCCUPANCY RATE

The room occupancy rate for hotels, motels and serviced apartments with 5 or more rooms was 65.1% in March quarter 2007.

For hotels, motels and serviced apartments with 15 or more rooms, the room occupancy rate was 66.6%, while for 5 to 14 room hotels, motels and serviced apartments, the room occupancy rate was 47.9%.

ROOM OCCUPANCY RATE, Original—Australia



(a) These establishments were included in the survey from March quarter 2005 onwards.

ROOM NIGHTS OCCUPIED

Total room nights occupied were 13.6 million in March quarter 2007 for hotels, motels and serviced apartments with 5 or more rooms. Room nights occupied were highest in New South Wales (4.3 million) and Queensland (3.6 million).

For hotels, motels and serviced apartments with 15 or more rooms, room nights occupied were 12.8 million in March quarter 2007, while for establishments with 5 to 14 rooms, room nights occupied were 0.8 million.

SUMMARY OF FINDINGS *continued*

Hotels, motels and serviced apartments continued

AVERAGE LENGTH OF STAY

The average length of stay in March quarter 2007 for hotels, motels and serviced apartments with 5 or more rooms was 2.3 days. For establishments with 15 or more rooms, the average length of stay was 2.3 days and 1.8 days for establishments with 5 to 14 rooms.

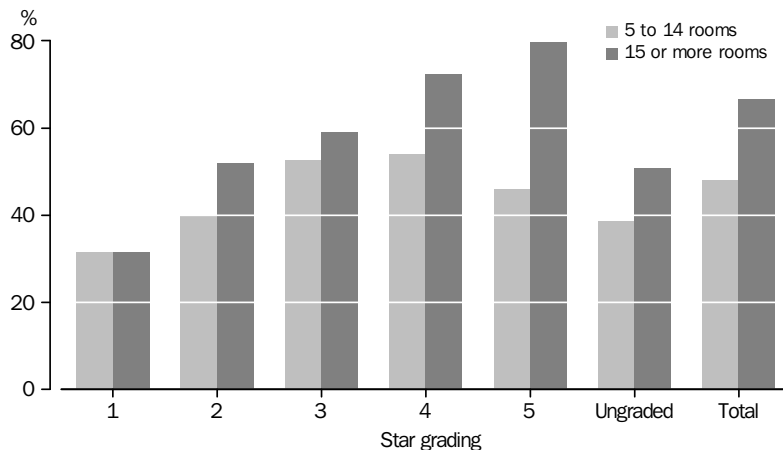
Queensland (2.7 days) reported the longest average length of stay for hotels, motels and serviced apartments with 15 or more rooms, followed by Western Australia (2.6 days). The shortest average length of stay was in Tasmania (1.9 days).

STAR GRADING

In March quarter 2007, the room occupancy rate for five-star hotels, motels and serviced apartments with 5 or more rooms was 79.5% compared with 31.5% for one-star. For hotels, motels and serviced apartments with 15 or more rooms, the room occupancy rate was 79.7% for five-star establishments compared with 31.4% for one-star.

For establishments with 5 to 14 rooms, four-star (53.9%) and three-star (52.6%) establishments had the highest room occupancy rates, compared with one-star establishments at 31.5%.

ROOM OCCUPANCY RATE, Stargrading—March Qtr 2007



SUMMARY OF FINDINGS *continued*

Caravan parks, holiday flats, units and houses, and visitor hostels

KEY FIGURES, Original—Australia

	Mar Qtr 2006	Jun Qtr 2006	Sep Qtr 2006	Dec Qtr 2006	Mar Qtr 2007
Caravan parks					
Total caravan park capacity (no.)	237 490	236 872	235 476	235 169	234 588
Nights occupied ('000)	11 120	10 766	11 215	10 854	11 248
Site occupancy rate (%)	52.1	50.2	52.5	50.3	53.5
Takings from accommodation (\$'000)	226 027	203 323	220 388	231 153	244 010
Holiday flats and units					
Total units (no.)	28 714	28 281	27 941	28 230	28 546
Nights occupied ('000)	1 351	1 041	1 238	1 315	1 337
Unit occupancy rate (%)	52.4	40.5	48.4	50.8	52.2
Takings from accommodation (\$'000)	156 184	108 196	140 168	157 995	161 209
Visitor hostels					
Bed spaces (no.)	48 042	47 732	47 405	46 631	46 770
Guest nights ('000)	2 325	1 928	2 032	2 256	2 351
Bed occupancy rate (%)	54.1	44.6	46.9	53.2	56.3
Takings from accommodation (\$'000)	53 337	45 136	49 155	55 751	57 361

ACCOMMODATION TAKINGS

In March quarter 2007, accommodation takings for caravan parks were \$244.0 million, an increase of 8.0% compared with March quarter 2006. New South Wales (\$94.4 million) had the highest accommodation takings for all caravan parks for March quarter 2007, contributing 38.7% of the total.

Accommodation takings for holiday flats, units and houses were \$161.2 million in March quarter 2007, an increase of 3.2% compared with March quarter 2006. For visitor hostels, accommodation takings were \$57.4 million, up 7.5% compared with March quarter 2006.

OCCUPANCY RATE

The site occupancy rate for all caravan parks in March quarter 2007 was 53.5%, an increase of 1.4 percentage points compared with March quarter 2006.

For holiday flats, units and houses, the unit occupancy rate was 52.2% in March quarter 2007, a decrease of 0.2 percentage points compared with March quarter 2006.

The bed occupancy rate for visitor hostels in March quarter 2007 was 56.3%, an increase of 2.2 percentage points compared with March quarter 2006. New South Wales (67.5%), Western Australia (62.7%) and Victoria (56.4%) had the highest bed occupancy rates for visitor hostels in March quarter 2007.

LIST OF TABLES

page

AUSTRALIA

ORIGINAL, SEASONALLY ADJUSTED AND TREND

- 1** Hotels, motels and serviced apartments with 15 or more rooms 9

SUMMARY

- 2** Hotels, motels and serviced apartments 10
3 Licensed hotels and resorts 12
4 Motels, private hotels and guest houses 14
5 Serviced apartments 16
6 Caravan parks 18
7 Holiday flats, units and houses 20
8 Visitor hostels 22

STAR GRADING

- 9** Hotels, motels and serviced apartments with 5-14 rooms 23
10 Hotels, motels and serviced apartments with 15 or more rooms 25
11 Hotels, motels and serviced apartments with 5 or more rooms 27

STATES AND TERRITORIES

- 12** Hotels, motels and serviced apartments with 5-14 rooms 29
13 Hotels, motels and serviced apartments with 15 or more rooms 32
14 Hotels, motels and serviced apartments with 5 or more rooms 35
15 Caravan parks, short-term 38
16 Caravan parks, long-term 41
17 Caravan parks, total 44
18 Holiday flats, units and houses, real estate agents 47
19 Holiday flats, units and houses, other letting entities 49
20 Holiday flats, units and houses, total 51
21 Visitor hostels 53

HOTELS, MOTELS AND SERVICED APARTMENTS WITH 15 OR MORE ROOMS, Australia

<i>Period</i>	<u>ORIGINAL</u>		<u>SEASONALLY ADJUSTED</u>		<u>TREND</u>	
	<i>Room occupancy rate</i>	<i>Takings from accommodation</i>	<i>Room occupancy rate</i>	<i>Takings from accommodation</i>	<i>Room occupancy rate</i>	<i>Takings from accommodation</i>
	%	'000	%	'000	%	'000
2003						
September Quarter	62.5	1 373 488	60.9	1 336 945	60.4	1 343 248
December Quarter	63.5	1 499 344	61.9	1 429 728	61.4	1 383 908
2004						
March Quarter	61.6	1 398 573	61.1	1 373 515	61.8	1 403 269
June Quarter	58.4	1 277 463	61.9	1 405 961	61.9	1 409 215
September Quarter	64.2	1 485 716	62.6	1 442 249	62.2	1 425 931
December Quarter	63.7	1 513 029	62.1	1 442 759	62.7	1 459 199
2005						
March Quarter	63.6	1 525 330	63.3	1 499 361	63.0	1 497 753
June Quarter	59.7	1 395 043	63.4	1 542 050	63.1	1 535 546
September Quarter	64.4	1 618 246	62.8	1 575 086	63.0	1 564 104
December Quarter	64.5	1 650 876	62.8	1 569 181	63.2	1 591 635
2006						
March Quarter	64.2	1 649 208	64.1	1 632 140	63.7	1 624 066
June Quarter	60.9	1 526 511	64.6	1 680 990	64.1	1 666 448
September Quarter	65.3	1 740 492	63.5	1 685 748	64.4	1 714 795
December Quarter	66.9	1 866 614	65.3	1 785 694	65.1	1 762 980
2007						
March Quarter	66.6	1 832 321	66.3	1 806 882	65.9	1 808 780

SUMMARY OF HOTELS, MOTELS AND SERVICED APARTMENTS, Australia

<i>Period</i>	<i>Establishments</i> no.	<i>Rooms</i> no.	<i>Bed spaces</i> no.	<i>Persons employed</i> no.	<i>Room nights occupied</i> '000	<i>Room occupancy rate</i> %
.....						
HOTELS MOTELS AND SERVICED APARTMENTS WITH 5 TO 14 ROOMS						
2006						
March Quarter	1 983	18 971	56 164	12 279	798.3	47.3
June Quarter	1 954	18 701	55 350	11 789	739.7	43.9
September Quarter	1 946	18 609	54 614	11 477	758.3	44.4
December Quarter	1 937	18 631	54 672	11 894	792.3	46.7
2007						
March Quarter	1 919	18 441	54 121	11 542	785.1	47.9
Year ended March 2006	3 199.5	45.4
Year ended March 2007	3 075.3	45.7
.....						
HOTELS MOTELS AND SERVICED APARTMENTS WITH 15 OR MORE ROOMS						
2006						
March Quarter	4 187	212 598	607 385	114 042	12 225.5	64.2
June Quarter	4 194	213 035	609 540	114 647	11 748.7	60.9
September Quarter	4 186	213 768	614 417	116 839	12 829.8	65.3
December Quarter	4 195	215 172	619 120	116 317	13 161.0	66.9
2007						
March Quarter	4 205	215 763	619 187	115 703	12 833.8	66.6
Year ended March 2006	48 646.6	63.2
Year ended March 2007	50 573.3	65.0
.....						
HOTELS MOTELS AND SERVICED APARTMENTS WITH 5 OR MORE ROOMS						
2006						
March Quarter	6 170	231 569	663 549	126 321	13 023.8	62.8
June Quarter	6 148	231 736	664 890	126 436	12 488.3	59.5
September Quarter	6 132	232 377	669 031	128 316	13 588.1	63.7
December Quarter	6 132	233 803	673 792	128 211	13 953.3	65.3
2007						
March Quarter	6 124	234 204	673 308	127 245	13 618.9	65.1
Year ended March 2006	51 846.1	61.7
Year ended March 2007	53 648.7	63.4
.....						
..	not applicable					

<i>Period</i>	<i>Guest nights occupied</i> '000	<i>Bed occupancy rate</i> %	<i>Guest arrivals</i> '000	<i>Average length of stay</i> days	<i>Takings from accommodation</i> \$'000
.....					
HOTELS MOTELS AND SERVICED APARTMENTS WITH 5 TO 14 ROOMS					
2006					
March Quarter	1 511.2	30.3	822.6	1.8	72 685
June Quarter	1 345.0	27.0	752.9	1.8	64 684
September Quarter	1 392.1	27.8	776.9	1.8	69 022
December Quarter	1 490.5	30.0	824.4	1.8	73 934
2007					
March Quarter	1 492.1	31.1	811.0	1.8	75 437
Year ended March 2006	5 971.8	28.9	3 331.9	1.8	279 284
Year ended March 2007	5 719.7	28.9	3 165.2	1.8	283 078
.....					
HOTELS MOTELS AND SERVICED APARTMENTS WITH 15 OR MORE ROOMS					
2006					
March Quarter	21 994.2	40.5	9 465.5	2.3	1 649 208
June Quarter	20 326.3	36.9	9 159.3	2.2	1 526 511
September Quarter	22 585.1	40.0	10 079.5	2.2	1 740 492
December Quarter	23 485.3	41.5	10 346.0	2.3	1 866 614
2007					
March Quarter	22 898.5	41.5	9 842.1	2.3	1 832 321
Year ended March 2006	86 665.0	39.6	38 037.9	2.3	6 313 374
Year ended March 2007	89 295.2	40.0	39 426.9	2.3	6 965 938
.....					
HOTELS MOTELS AND SERVICED APARTMENTS WITH 5 OR MORE ROOMS					
2006					
March Quarter	23 505.4	39.6	10 288.1	2.3	1 721 893
June Quarter	21 671.3	36.1	9 912.1	2.2	1 591 196
September Quarter	23 977.1	39.0	10 856.4	2.2	1 809 514
December Quarter	24 975.7	40.6	11 170.4	2.2	1 940 549
2007					
March Quarter	24 390.7	40.6	10 653.2	2.3	1 907 758
Year ended March 2006	92 636.8	38.7	41 369.8	2.2	6 592 658
Year ended March 2007	95 014.9	39.1	42 592.1	2.2	7 249 016

SUMMARY OF LICENSED HOTELS AND RESORTS, Australia

<i>Period</i>	<i>Establishments</i> no.	<i>Rooms</i> no.	<i>Bed spaces</i> no.	<i>Persons employed</i> no.	<i>Room nights occupied</i> '000	<i>Room occupancy rate</i> %
.....						
LICENSED HOTELS WITH 5 TO 14 ROOMS						
2006						
March Quarter	467	4 406	11 903	7 493	155.1	39.2
June Quarter	451	4 255	11 470	7 055	141.2	36.5
September Quarter	452	4 291	11 490	6 678	143.3	36.3
December Quarter	445	4 249	11 416	6 914	147.0	37.8
2007						
March Quarter	443	4 219	11 209	6 759	148.0	39.2
Year ended March 2006	598.9	36.7
Year ended March 2007	579.5	37.5
.....						
LICENSED HOTELS WITH 15 OR MORE ROOMS						
2006						
March Quarter	816	79 706	206 960	69 705	4 972.5	69.6
June Quarter	822	79 808	207 451	69 903	4 751.4	65.7
September Quarter	820	80 350	211 092	71 662	5 219.8	70.6
December Quarter	823	80 560	212 826	71 510	5 387.2	73.1
2007						
March Quarter	831	81 048	213 415	71 551	5 275.6	72.9
Year ended March 2006	19 879.0	68.5
Year ended March 2007	20 634.0	70.6
.....						
LICENSED HOTELS WITH 5 OR MORE ROOMS						
2006						
March Quarter	1 283	84 112	218 863	77 198	5 127.7	68.0
June Quarter	1 273	84 063	218 921	76 958	4 892.6	64.3
September Quarter	1 272	84 641	222 582	78 340	5 363.1	68.9
December Quarter	1 268	84 809	224 242	78 424	5 534.2	71.4
2007						
March Quarter	1 274	85 267	224 624	78 310	5 423.6	71.3
Year ended March 2006	20 477.8	66.8
Year ended March 2007	21 213.5	68.9
.....						
..	not applicable					

SUMMARY OF LICENSED HOTELS AND RESORTS, Australia *continued*

<i>Period</i>	<i>Guest nights occupied</i> '000	<i>Bed occupancy rate</i> %	<i>Guest arrivals</i> '000	<i>Average length of stay</i> days	<i>Takings from accommodation</i> \$'000
---------------	--	--	-----------------------------------	---	---

LICENSED HOTELS WITH 5 TO 14 ROOMS

2006					
March Quarter	240.5	22.5	138.4	1.7	10 412
June Quarter	216.5	20.8	124.0	1.7	9 276
September Quarter	221.6	21.0	132.1	1.7	9 605
December Quarter	229.1	22.0	133.7	1.7	10 332
2007					
March Quarter	233.7	23.3	134.4	1.7	10 638
Year ended March 2006	921.9	21.2	550.6	1.7	39 023
Year ended March 2007	900.9	21.7	524.2	1.7	39 850

LICENSED HOTELS WITH 15 OR MORE ROOMS

2006					
March Quarter	8 110.2	43.8	3 507.8	2.3	801 350
June Quarter	7 479.6	39.9	3 432.8	2.2	732 327
September Quarter	8 388.0	43.2	3 830.6	2.2	839 229
December Quarter	8 816.8	45.4	3 941.4	2.2	924 637
2007					
March Quarter	8 581.4	45.1	3 707.5	2.3	902 567
Year ended March 2006	32 120.2	42.8	14 160.1	2.3	3 063 046
Year ended March 2007	33 265.7	43.4	14 912.3	2.2	3 398 760

LICENSED HOTELS WITH 5 OR MORE ROOMS

2006					
March Quarter	8 350.6	42.6	3 646.2	2.3	811 762
June Quarter	7 696.1	38.9	3 556.8	2.2	741 603
September Quarter	8 609.6	42.0	3 962.7	2.2	848 834
December Quarter	9 045.9	44.2	4 075.1	2.2	934 969
2007					
March Quarter	8 815.1	44.0	3 841.9	2.3	913 205
Year ended March 2006	33 042.1	41.6	14 710.7	2.2	3 102 069
Year ended March 2007	34 166.6	42.3	15 436.4	2.2	3 438 610

SUMMARY OF MOTELS, PRIVATE HOTELS AND GUEST HOUSES, Australia

<i>Period</i>	<i>Establishments</i> no.	<i>Rooms</i> no.	<i>Bed spaces</i> no.	<i>Persons employed</i> no.	<i>Room nights occupied</i> '000	<i>Room occupancy rate</i> %
.....						
MOTELS AND GUEST HOUSES WITH 5 TO 14 ROOMS						
2006						
March Quarter	1 193	11 744	33 705	3 791	497.6	47.8
June Quarter	1 172	11 571	33 084	3 726	467.1	44.9
September Quarter	1 162	11 458	32 223	3 796	474.6	45.1
December Quarter	1 156	11 455	32 158	3 904	490.5	47.2
2007						
March Quarter	1 140	11 295	31 782	3 756	484.3	48.5
Year ended March 2006	2 025.1	46.4
Year ended March 2007	1 916.5	46.4
.....						
MOTELS AND GUEST HOUSES WITH 15 OR MORE ROOMS						
2006						
March Quarter	2 491	86 584	250 908	29 646	4 392.8	56.8
June Quarter	2 491	86 847	251 385	29 971	4 361.1	55.6
September Quarter	2 482	86 566	250 771	30 195	4 613.5	58.0
December Quarter	2 479	86 859	250 488	29 629	4 682.0	59.1
2007						
March Quarter	2 481	86 910	249 928	29 338	4 542.0	58.6
Year ended March 2006	17 673.6	56.3
Year ended March 2007	18 198.5	57.8
.....						
MOTELS AND GUEST HOUSES WITH 5 OR MORE ROOMS						
2006						
March Quarter	3 684	98 328	284 613	33 437	4 890.4	55.7
June Quarter	3 663	98 418	284 469	33 697	4 828.2	54.4
September Quarter	3 644	98 024	282 994	33 991	5 088.1	56.5
December Quarter	3 635	98 314	282 646	33 533	5 172.5	57.8
2007						
March Quarter	3 621	98 205	281 710	33 094	5 026.3	57.5
Year ended March 2006	19 698.7	55.1
Year ended March 2007	20 115.0	56.5
.....						
..	not applicable					

<i>Period</i>	<i>Guest nights occupied</i> '000	<i>Bed occupancy rate</i> %	<i>Guest arrivals</i> '000	<i>Average length of stay</i> days	<i>Takings from accommodation</i> \$'000
---------------	--	--	-----------------------------------	---	---

MOTELS AND GUEST HOUSES WITH 5 TO 14 ROOMS

2006					
March Quarter	908.3	30.5	554.0	1.6	44 545
June Quarter	820.0	27.6	508.6	1.6	40 218
September Quarter	836.9	28.3	521.4	1.6	42 803
December Quarter	878.0	30.2	546.0	1.6	44 633
2007					
March Quarter	875.4	31.3	533.0	1.6	45 238
Year ended March 2006	3 646.1	29.5	2 265.4	1.6	174 373
Year ended March 2007	3 410.3	29.3	2 109.0	1.6	172 892

MOTELS AND GUEST HOUSES WITH 15 OR MORE ROOMS

2006					
March Quarter	7 656.2	34.2	4 219.3	1.8	445 993
June Quarter	7 418.0	32.7	4 075.0	1.8	434 222
September Quarter	7 950.4	34.5	4 373.4	1.8	475 250
December Quarter	8 062.0	35.3	4 456.6	1.8	486 120
2007					
March Quarter	7 836.1	35.2	4 264.7	1.8	482 021
Year ended March 2006	30 575.4	33.7	17 052.8	1.8	1 742 460
Year ended March 2007	31 266.5	34.4	17 169.7	1.8	1 877 613

MOTELS AND GUEST HOUSES WITH 5 OR MORE ROOMS

2006					
March Quarter	8 564.5	33.8	4 773.3	1.8	490 538
June Quarter	8 238.0	32.1	4 583.6	1.8	474 441
September Quarter	8 787.3	33.8	4 894.8	1.8	518 053
December Quarter	8 940.0	34.7	5 002.7	1.8	530 753
2007					
March Quarter	8 711.5	34.8	4 797.7	1.8	527 259
Year ended March 2006	34 221.5	33.2	19 318.2	1.8	1 916 833
Year ended March 2007	34 676.8	33.9	19 278.7	1.8	2 050 505

SUMMARY OF SERVICED APARTMENTS, Australia

<i>Period</i>	<i>Establishments</i> no.	<i>Rooms</i> no.	<i>Bed spaces</i> no.	<i>Persons employed</i> no.	<i>Room nights occupied</i> '000	<i>Room occupancy rate</i> %
.....						
SERVICED APARTMENTS WITH 5 TO 14 ROOMS						
2006						
March Quarter	323	2 821	10 556	995	145.7	57.5
June Quarter	331	2 875	10 796	1 008	131.3	50.6
September Quarter	332	2 860	10 901	1 003	140.4	53.6
December Quarter	336	2 927	11 098	1 076	154.8	57.9
2007						
March Quarter	336	2 927	11 130	1 027	152.8	58.4
Year ended March 2006	575.5	54.6
Year ended March 2007	579.3	55.2
.....						
SERVICED APARTMENTS WITH 15 OR MORE ROOMS						
2006						
March Quarter	880	46 308	149 517	14 691	2 860.1	68.7
June Quarter	881	46 380	150 704	14 773	2 636.2	62.5
September Quarter	884	46 852	152 554	14 982	2 996.6	69.8
December Quarter	893	47 753	155 806	15 178	3 091.9	70.5
2007						
March Quarter	893	47 805	155 844	14 814	3 016.1	70.4
Year ended March 2006	11 094.1	67.2
Year ended March 2007	11 740.8	68.3
.....						
SERVICED APARTMENTS WITH 5 OR MORE ROOMS						
2006						
March Quarter	1 203	49 129	160 073	15 686	3 005.8	68.1
June Quarter	1 212	49 255	161 500	15 781	2 767.5	61.8
September Quarter	1 216	49 712	163 455	15 985	3 137.0	68.9
December Quarter	1 229	50 680	166 904	16 254	3 246.7	69.8
2007						
March Quarter	1 229	50 732	166 974	15 841	3 168.9	69.7
Year ended March 2006	11 669.6	66.4
Year ended March 2007	12 320.2	67.6
.....						
..	not applicable					

SUMMARY OF SERVICED APARTMENTS, Australia *continued*

<i>Period</i>	<i>Guest nights occupied</i> '000	<i>Bed occupancy rate</i> %	<i>Guest arrivals</i> '000	<i>Average length of stay</i> days	<i>Takings from accommodation</i> \$'000
.....					
SERVICED APARTMENTS WITH 5 TO 14 ROOMS					
2006					
March Quarter	362.4	38.2	130.1	2.8	17 728
June Quarter	308.5	31.6	120.2	2.6	15 190
September Quarter	333.6	33.4	123.4	2.7	16 614
December Quarter	383.4	37.8	144.7	2.6	18 970
2007					
March Quarter	383.1	38.5	143.7	2.7	19 561
Year ended March 2006	1 403.8	35.5	515.9	2.7	65 888
Year ended March 2007	1 408.5	35.4	532.0	2.6	70 335
.....					
SERVICED APARTMENTS WITH 15 OR MORE ROOMS					
2006					
March Quarter	6 227.8	46.4	1 738.4	3.6	401 865
June Quarter	5 428.8	39.6	1 651.5	3.3	359 962
September Quarter	6 246.7	44.7	1 875.5	3.3	426 013
December Quarter	6 606.5	46.3	1 947.9	3.4	455 857
2007					
March Quarter	6 481.0	46.5	1 869.9	3.5	447 733
Year ended March 2006	23 969.4	45.2	6 824.9	3.5	1 507 868
Year ended March 2007	24 763.0	44.3	7 344.9	3.4	1 689 566
.....					
SERVICED APARTMENTS WITH 5 OR MORE ROOMS					
2006					
March Quarter	6 590.2	45.8	1 868.6	3.5	419 593
June Quarter	5 737.2	39.1	1 771.7	3.2	375 152
September Quarter	6 580.3	43.9	1 998.9	3.3	442 627
December Quarter	6 989.8	45.7	2 092.6	3.3	474 827
2007					
March Quarter	6 864.1	45.9	2 013.6	3.4	467 294
Year ended March 2006	25 373.2	44.5	7 340.9	3.5	1 573 756
Year ended March 2007	26 171.5	43.7	7 876.9	3.3	1 759 900

CAPACITY

Period	Establishments	On-site vans	Other powered sites	Unpowered sites	Cabins, flats units and villas	Total capacity
	no.	no.	no.	no.	no.	no.
CARAVAN PARKS, SHORT TERM (b)						
2006						
March Quarter	1 483	13 277	128 939	39 714	25 255	207 185
June Quarter	1 475	13 469	127 662	40 035	25 309	206 475
September Quarter	1 467	13 132	127 320	39 506	25 381	205 339
December Quarter	1 462	13 320	126 644	39 295	25 613	204 872
2007						
March Quarter	1 457	13 123	126 445	38 895	26 038	204 501
Year ended March 2006
Year ended March 2007
CARAVAN PARKS, LONG TERM (b)						
2006						
March Quarter	235	4 254	17 764	2 074	6 213	30 305
June Quarter	235	4 287	17 743	2 081	6 286	30 397
September Quarter	233	4 240	17 524	2 085	6 288	30 137
December Quarter	234	4 163	17 630	2 097	6 407	30 297
2007						
March Quarter	232	4 032	17 754	2 037	6 264	30 087
Year ended March 2006
Year ended March 2007
CARAVAN PARKS, TOTAL						
2006						
March Quarter	1 718	17 531	146 703	41 788	31 468	237 490
June Quarter	1 710	17 756	145 405	42 116	31 595	236 872
September Quarter	1 700	17 372	144 844	41 591	31 669	235 476
December Quarter	1 696	17 483	144 274	41 392	32 020	235 169
2007						
March Quarter	1 689	17 155	144 199	40 932	32 302	234 588
Year ended March 2006
Year ended March 2007

.. not applicable

(b) For definitions of short-term and long-term caravan

(a) Comprising establishments with 40 or more powered sites and cabins, flats, units and villas

parks, see Glossary.

<i>Period</i>	<i>Persons employed</i>	<i>Sites occupied by long-term guests</i>	<i>Other sites permanently reserved</i>	<i>Site nights occupied</i>	<i>Site occupancy rate</i>	<i>Takings from accommodation</i>
	no.	no.	no.	'000	%	\$'000
CARAVAN PARKS, SHORT TERM (b)						
2006						
March Quarter	8 636	19 156	40 624	9 032.9	48.5	189 208
June Quarter	8 496	18 985	40 240	8 729.2	46.8	168 334
September Quarter	8 509	18 957	40 912	9 124.9	49.0	182 011
December Quarter	8 830	18 187	40 410	8 757.4	46.6	191 194
2007						
March Quarter	8 793	18 346	40 149	9 158.4	50.0	204 863
Year ended March 2006	35 864.3	47.7	688 643
Year ended March 2007	35 770.0	48.1	746 401
CARAVAN PARKS, LONG TERM (b)						
2006						
March Quarter	1 320	17 594	1 567	2 086.6	76.6	36 819
June Quarter	1 290	17 165	1 511	2 036.6	73.6	34 989
September Quarter	1 315	17 079	1 734	2 090.4	75.4	38 378
December Quarter	1 334	17 133	1 836	2 096.1	75.2	39 960
2007						
March Quarter	1 297	16 896	1 770	2 089.8	77.2	39 148
Year ended March 2006	8 461.4	75.2	145 384
Year ended March 2007	8 312.9	75.3	152 474
CARAVAN PARKS, TOTAL						
2006						
March Quarter	9 956	36 750	42 191	11 119.5	52.1	226 027
June Quarter	9 786	36 150	41 751	10 765.8	50.2	203 323
September Quarter	9 824	36 036	42 646	11 215.3	52.5	220 388
December Quarter	10 164	35 320	42 246	10 853.5	50.3	231 153
2007						
March Quarter	10 090	35 242	41 919	11 248.2	53.5	244 010
Year ended March 2006	44 325.7	51.2	834 026
Year ended March 2007	44 082.9	51.6	898 875

.. not applicable

(a) Comprising establishments with 40 or more powered sites and cabins, flats, units and villas

(b) For definitions of short-term and long-term caravan parks, see Glossary.

Period	CAPACITY					
	Letting entities (a)	Single bedroom	Multiple bedroom	Total	Bed spaces	Persons employed (b)
	no.	no.	no.	no.	no.	no.
REAL ESTATE AGENTS						
2006						
March Quarter	166	664	13 490	14 154	76 305	..
June Quarter	164	601	13 141	13 742	75 441	..
September Quarter	164	636	12 865	13 501	75 757	..
December Quarter	161	637	13 041	13 678	76 905	..
2007						
March Quarter	158	637	13 106	13 743	77 033	..
Year ended March 2006
Year ended March 2007
OTHER LETTING ENTITIES						
2006						
March Quarter	418	4 383	10 177	14 560	58 849	2 402
June Quarter	415	4 190	10 349	14 539	58 745	2 395
September Quarter	418	4 097	10 343	14 440	58 780	2 535
December Quarter	418	4 119	10 433	14 552	59 430	2 556
2007						
March Quarter	421	4 241	10 562	14 803	59 971	2 473
Year ended March 2006
Year ended March 2007
HOLIDAY FLATS AND UNITS						
2006						
March Quarter	584	5 047	23 667	28 714	135 154	..
June Quarter	579	4 791	23 490	28 281	134 186	..
September Quarter	582	4 733	23 208	27 941	134 537	..
December Quarter	579	4 756	23 474	28 230	136 335	..
2007						
March Quarter	579	4 878	23 668	28 546	137 004	..
Year ended March 2006
Year ended March 2007

.. not applicable

(a) The number of owners, managers or real estate agents with 15 or more self-contained units.

(b) Employment numbers exclude real estate agents and their employees.

<i>Period</i>	<i>Unit nights occupied</i> '000	<i>Unit occupancy rate</i> %	<i>Unit lettings</i> '000	<i>Average length of stay</i> days	<i>Takings from accommodation</i> \$'000
.....					
REAL ESTATE AGENTS					
2006					
March Quarter	492.6	38.7	81.7	6.0	52 386
June Quarter	313.1	25.0	59.5	5.3	27 187
September Quarter	339.5	27.6	61.3	5.5	32 234
December Quarter	407.4	32.4	87.6	4.7	41 800
2007					
March Quarter	449.1	36.4	77.6	5.8	50 314
Year ended March 2006	1 644.0	32.6	289.9	5.7	155 101
Year ended March 2007	1 509.1	30.3	285.9	5.3	151 535
.....					
OTHER LETTING ENTITIES					
2006					
March Quarter	858.2	65.7	287.0	3.0	103 799
June Quarter	728.1	55.1	259.8	2.8	81 009
September Quarter	899.0	67.8	299.2	3.0	107 934
December Quarter	907.3	68.1	323.8	2.8	116 195
2007					
March Quarter	888.1	67.0	301.1	2.9	110 895
Year ended March 2006	3 417.6	65.2	1 086.4	3.1	387 435
Year ended March 2007	3 422.4	64.5	1 183.9	2.9	416 033
.....					
HOLIDAY FLATS AND UNITS					
2006					
March Quarter	1 350.8	52.4	368.7	3.7	156 184
June Quarter	1 041.2	40.5	319.3	3.3	108 196
September Quarter	1 238.5	48.4	360.5	3.4	140 168
December Quarter	1 314.7	50.8	411.4	3.2	157 995
2007					
March Quarter	1 337.2	52.2	378.7	3.5	161 209
Year ended March 2006	5 061.7	49.2	1 376.3	3.7	542 536
Year ended March 2007	4 931.5	48.0	1 469.9	3.4	567 568

SUMMARY OF VISITOR HOSTELS(a), Australia

<i>Period</i>	<i>Establishments</i>	<i>Bed spaces</i>	<i>Persons employed</i>	<i>Guest arrivals</i>	<i>Guest nights occupied</i>	<i>Bed occupancy rate</i>	<i>Average length of stay</i>	<i>Takings from accommodation</i>
no.	no.	no.	no.	no.	no.	%	days	\$'000
2006								
March Quarter	451	48 042	3 281	843 472	2 324 677	54.1	2.8	53 337
June Quarter	442	47 732	3 277	701 613	1 927 517	44.6	2.7	45 136
September Quarter	433	47 405	3 250	765 362	2 031 646	46.9	2.7	49 155
December Quarter	429	46 631	3 271	744 631	2 255 507	53.2	3.0	55 751
2007								
March Quarter	427	46 770	3 231	850 417	2 351 032	56.3	2.8	57 361
Year ended March 2006	3 216 829	8 384 347	48.1	2.6	192 743
Year ended March 2007	3 062 023	8 565 702	50.2	2.8	207 404

.. not applicable

(a) Comprising establishments with 25 or more bed spaces.

STAR GRADING

<i>Period</i>	1	2	3	4	5	<i>Ungraded</i>	<i>Total</i>
---------------	---	---	---	---	---	-----------------	--------------

ESTABLISHMENTS, CAPACITY AND EMPLOYMENT (no.)

March Quarter 2006

Establishments	84	318	849	390	19	323	1 983
Rooms	780	3 075	8 769	3 257	154	2 936	18 971
Bed spaces	1 969	9 038	26 523	9 656	402	8 576	56 164
Persons employed	877	2 651	3 763	1 565	90	3 333	12 279

March Quarter 2007

Establishments	76	299	858	375	17	294	1 919
Rooms	719	2 910	8 864	3 102	136	2 710	18 441
Bed spaces	1 850	8 368	26 326	9 374	331	7 872	54 121
Persons employed	870	2 535	3 815	1 362	75	2 885	11 542

ROOM NIGHTS OCCUPIED ('000)

2006

<i>March Quarter</i>	22.2	109.3	407.0	151.3	7.0	101.5	798.3
----------------------	------	-------	-------	-------	-----	-------	-------

2007

January	6.8	35.3	145.2	54.0	2.2	30.0	273.4
February	6.4	32.0	121.2	45.0	1.5	27.3	233.4
March	7.0	36.6	148.7	52.1	1.9	32.1	278.4
<i>March Quarter</i>	20.2	103.8	415.1	151.0	5.6	89.4	785.1

ROOM OCCUPANCY RATE (%)

2006

<i>March Quarter</i>	31.7	39.7	51.8	51.6	50.7	40.4	47.3
----------------------	------	------	------	------	------	------	------

2007

January	30.9	39.5	53.6	56.1	51.3	37.5	48.6
February	32.3	39.4	49.4	52.2	40.5	38.1	46.0
March	31.5	40.6	54.6	53.1	45.4	40.0	49.1
<i>March Quarter</i>	31.5	39.8	52.6	53.9	45.9	38.6	47.9

GUEST NIGHTS OCCUPIED ('000)

2006

<i>March Quarter</i>	33.4	188.8	765.5	329.0	13.1	181.4	1 511.2
----------------------	------	-------	-------	-------	------	-------	---------

2007

January	11.3	64.8	293.8	130.5	4.4	56.4	561.2
February	9.6	53.0	215.2	95.2	3.0	46.8	422.8
March	10.5	61.7	267.7	109.3	3.7	55.3	508.1
<i>March Quarter</i>	31.3	179.5	776.7	335.0	11.1	158.5	1 492.1

BED OCCUPANCY RATE (%)

2006

<i>March Quarter</i>	18.8	23.3	32.2	37.8	36.1	25.0	30.3
----------------------	------	------	------	------	------	------	------

2007

January	19.9	25.2	36.5	44.9	43.2	24.6	34.0
February	18.7	22.7	29.5	36.7	32.4	22.7	28.4
March	18.3	23.8	33.1	37.1	35.7	24.0	30.6
<i>March Quarter</i>	19.0	23.9	33.2	39.6	37.3	23.8	31.1

continued

Period	STAR GRADING						Total
	1	2	3	4	5	Ungraded	
GUEST ARRIVALS ('000)							
2006							
<i>March Quarter</i>	18.8	112.4	437.5	152.4	6.5	95.0	822.6
2007							
January	6.9	37.9	162.9	55.9	2.3	27.8	293.7
February	5.9	31.2	126.8	45.6	1.6	23.6	234.7
March	6.8	36.5	155.9	53.3	2.0	28.2	282.6
<i>March Quarter</i>	19.5	105.7	445.6	154.8	5.8	79.6	811.0
AVERAGE LENGTH OF STAY (days)							
2006							
<i>March Quarter</i>	1.8	1.7	1.7	2.2	2.0	1.9	1.8
2007							
January	1.6	1.7	1.8	2.3	1.9	2.0	1.9
February	1.6	1.7	1.7	2.1	1.9	2.0	1.8
March	1.6	1.7	1.7	2.1	1.9	2.0	1.8
<i>March Quarter</i>	1.6	1.7	1.7	2.2	1.9	2.0	1.8
TAKINGS FROM ACCOMMODATION (\$'000)							
2006							
<i>March Quarter</i>	1 206	7 028	33 310	21 279	1 364	8 498	72 685
2007							
January	363	2 472	13 218	8 516	557	2 773	27 899
February	340	2 133	10 129	6 420	395	2 299	21 716
March	373	2 436	12 414	7 429	481	2 688	25 822
<i>March Quarter</i>	1 076	7 041	35 761	22 365	1 433	7 760	75 437
AVERAGE TAKINGS PER ROOM NIGHT OCCUPIED (\$)							
2006							
<i>March Quarter</i>	54.22	64.31	81.84	140.65	194.20	83.71	91.04
2007							
January	53.38	70.11	91.05	157.77	257.39	92.51	102.06
February	52.96	66.73	83.58	142.78	255.99	84.22	93.05
March	53.20	66.59	83.48	142.70	251.13	83.81	92.76
<i>March Quarter</i>	53.19	67.83	86.16	148.11	254.87	86.85	96.09
AVERAGE TAKINGS PER ROOM NIGHT AVAILABLE (\$)							
2006							
<i>March Quarter</i>	17.17	25.52	42.39	72.60	98.39	33.85	43.02
2007							
January	16.52	27.69	48.79	88.56	132.05	34.69	49.60
February	17.12	26.32	41.32	74.48	103.73	32.07	42.77
March	16.73	27.00	45.57	75.83	114.13	33.56	45.53
<i>March Quarter</i>	16.78	27.03	45.36	79.78	117.07	33.49	46.07

STAR GRADING

<i>Period</i>	1	2	3	4	5	<i>Ungraded</i>	<i>Total</i>
---------------	---	---	---	---	---	-----------------	--------------

ESTABLISHMENTS, CAPACITY AND EMPLOYMENT (no.)

March Quarter 2006

Establishments	51	304	2 050	1 461	107	214	4 187
Rooms	1 501	9 584	73 366	98 970	22 921	6 256	212 598
Bed spaces	4 911	27 224	215 741	285 781	56 760	16 968	607 385
Persons employed	572	3 684	24 508	50 006	32 298	2 974	114 042

March Quarter 2007

Establishments	55	297	2 071	1 459	106	217	4 205
Rooms	1 724	9 306	76 329	98 960	22 795	6 649	215 763
Bed spaces	5 737	26 503	224 268	287 077	56 829	18 773	619 187
Persons employed	664	3 605	27 015	48 577	32 695	3 147	115 703

ROOM NIGHTS OCCUPIED ('000)

2006

<i>March Quarter</i>	37.2	406.1	3 747.5	6 234.2	1 550.0	250.6	12 225.5
----------------------	------	-------	---------	---------	---------	-------	----------

2007

January	15.8	142.4	1 334.7	2 129.3	518.4	91.5	4 232.2
February	13.8	132.1	1 226.3	2 013.7	527.3	89.6	4 002.8
March	17.3	151.4	1 461.3	2 281.9	581.9	104.9	4 598.7
<i>March Quarter</i>	46.9	426.0	4 022.4	6 424.9	1 627.6	286.0	12 833.8

ROOM OCCUPANCY RATE (%)

2006

<i>March Quarter</i>	29.1	47.5	57.1	70.0	75.2	46.7	64.2
----------------------	------	------	------	------	------	------	------

2007

January	30.8	50.5	57.0	69.6	73.5	47.7	63.8
February	29.7	51.6	58.0	72.8	83.7	51.1	66.8
March	33.6	53.4	62.3	74.5	82.5	53.6	69.2
<i>March Quarter</i>	31.4	51.8	59.1	72.3	79.7	50.8	66.6

GUEST NIGHTS OCCUPIED ('000)

2006

<i>March Quarter</i>	58.8	724.0	6 830.5	11 472.5	2 500.7	407.7	21 994.2
----------------------	------	-------	---------	----------	---------	-------	----------

2007

January	31.6	262.8	2 663.4	4 335.7	902.7	169.9	8 366.1
February	23.6	221.1	2 098.4	3 425.9	807.9	140.0	6 716.8
March	29.9	260.2	2 539.6	3 928.3	888.4	169.3	7 815.7
<i>March Quarter</i>	85.1	744.1	7 301.4	11 689.8	2 598.9	479.3	22 898.5

BED OCCUPANCY RATE (%)

2006

<i>March Quarter</i>	14.4	30.0	35.4	44.6	49.0	28.7	40.5
----------------------	------	------	------	------	------	------	------

2007

January	18.9	33.1	38.7	48.9	51.3	31.7	44.0
February	15.6	30.5	33.8	42.7	51.4	28.6	39.1
March	17.8	32.5	36.9	44.2	50.5	31.1	41.0
<i>March Quarter</i>	17.5	32.1	36.5	45.4	51.0	30.5	41.5

Period	STAR GRADING						Total
	1	2	3	4	5	Ungraded	
GUEST ARRIVALS ('000)							
2006							
<i>March Quarter</i>	34.9	422.4	3 339.7	4 506.0	982.1	180.5	9 465.5
2007							
January	19.4	156.0	1 240.2	1 560.2	326.4	67.6	3 369.7
February	15.1	127.4	1 037.6	1 423.8	342.4	60.8	3 007.1
March	17.7	148.6	1 251.4	1 604.9	373.2	69.5	3 465.3
<i>March Quarter</i>	52.2	432.0	3 529.2	4 588.9	1 042.0	197.9	9 842.1
AVERAGE LENGTH OF STAY (days)							
2006							
<i>March Quarter</i>	1.7	1.7	2.0	2.5	2.5	2.3	2.3
2007							
January	1.6	1.7	2.1	2.8	2.8	2.5	2.5
February	1.6	1.7	2.0	2.4	2.4	2.3	2.2
March	1.7	1.8	2.0	2.4	2.4	2.4	2.3
<i>March Quarter</i>	1.6	1.7	2.1	2.5	2.5	2.4	2.3
TAKINGS FROM ACCOMMODATION (\$'000)							
2006							
<i>March Quarter</i>	2 331	29 696	356 003	887 488	347 702	25 987	1 649 208
2007							
January	1 234	10 860	144 414	326 386	123 232	10 714	616 840
February	1 094	9 687	122 512	294 007	119 618	9 675	556 592
March	1 414	11 039	149 058	344 595	140 917	11 865	658 888
<i>March Quarter</i>	3 742	31 586	415 985	964 987	383 767	32 253	1 832 321
AVERAGE TAKINGS PER ROOM NIGHT OCCUPIED (\$)							
2006							
<i>March Quarter</i>	62.63	73.13	95.00	142.36	224.33	103.72	134.90
2007							
January	78.03	76.24	108.20	153.28	237.71	117.08	145.75
February	79.23	73.30	99.90	146.00	226.86	107.98	139.05
March	81.90	72.91	102.00	151.01	242.15	113.13	143.28
<i>March Quarter</i>	79.81	74.14	103.42	150.19	235.78	112.78	142.77
AVERAGE TAKINGS PER ROOM NIGHT AVAILABLE (\$)							
2006							
<i>March Quarter</i>	18.25	34.73	54.24	99.70	168.76	48.47	86.60
2007							
January	24.03	38.47	61.71	106.66	174.63	55.86	93.02
February	23.57	37.80	57.91	106.32	189.82	55.13	92.93
March	27.53	38.91	63.55	112.47	199.69	60.68	99.14
<i>March Quarter</i>	25.09	38.41	61.16	108.56	187.98	57.31	95.10

STAR GRADING

<i>Period</i>	1	2	3	4	5	<i>Ungraded</i>	<i>Total</i>
---------------	---	---	---	---	---	-----------------	--------------

ESTABLISHMENTS, CAPACITY AND EMPLOYMENT (no.)

March Quarter 2006

Establishments	135	622	2 899	1 851	126	537	6 170
Rooms	2 281	12 659	82 135	102 227	23 075	9 192	231 569
Bed spaces	6 880	36 262	242 264	295 437	57 162	25 544	663 549
Persons employed	1 449	6 335	28 271	51 571	32 388	6 307	126 321

March Quarter 2007

Establishments	131	596	2 929	1 834	123	511	6 124
Rooms	2 443	12 216	85 193	102 062	22 931	9 359	234 204
Bed spaces	7 587	34 871	250 594	296 451	57 160	26 645	673 308
Persons employed	1 534	6 140	30 830	49 939	32 770	6 032	127 245

ROOM NIGHTS OCCUPIED ('000)

2006

<i>March Quarter</i>	59.5	515.3	4 154.5	6 385.5	1 557.0	352.1	13 023.8
----------------------	------	-------	---------	---------	---------	-------	----------

2007

January	22.6	177.7	1 479.9	2 183.3	520.6	121.5	4 505.6
February	20.2	164.1	1 347.5	2 058.7	528.8	116.9	4 236.2
March	24.3	188.0	1 610.1	2 333.9	583.9	137.0	4 877.1
<i>March Quarter</i>	67.1	529.8	4 437.4	6 575.9	1 633.3	375.3	13 618.9

ROOM OCCUPANCY RATE (%)

2006

<i>March Quarter</i>	30.0	45.6	56.5	69.4	75.1	44.7	62.8
----------------------	------	------	------	------	------	------	------

2007

January	30.8	47.8	56.7	69.2	73.3	44.7	62.6
February	30.5	48.7	57.1	72.2	83.4	47.3	65.2
March	33.0	50.3	61.5	73.8	82.2	49.7	67.6
<i>March Quarter</i>	31.5	48.9	58.5	71.7	79.5	47.2	65.1

GUEST NIGHTS OCCUPIED ('000)

2006

<i>March Quarter</i>	92.2	912.7	7 596.1	11 801.5	2 513.7	589.1	23 505.4
----------------------	------	-------	---------	----------	---------	-------	----------

2007

January	42.9	327.6	2 957.2	4 466.1	907.1	226.4	8 927.3
February	33.2	274.1	2 313.6	3 521.1	810.9	186.8	7 139.6
March	40.4	321.9	2 807.3	4 037.6	892.0	224.6	8 323.8
<i>March Quarter</i>	116.5	923.5	8 078.0	12 024.8	2 610.0	637.8	24 390.7

BED OCCUPANCY RATE (%)

2006

<i>March Quarter</i>	15.8	28.3	35.0	44.4	48.9	27.4	39.6
----------------------	------	------	------	------	------	------	------

2007

January	19.1	31.2	38.5	48.7	51.3	29.5	43.2
February	16.4	28.6	33.3	42.5	51.3	26.9	38.3
March	18.0	30.3	36.5	44.0	50.4	29.0	40.2
<i>March Quarter</i>	17.9	30.1	36.2	45.2	51.0	28.5	40.6

STAR GRADING

<i>Period</i>	1	2	3	4	5	<i>Ungraded</i>	<i>Total</i>
---------------	---	---	---	---	---	-----------------	--------------

GUEST ARRIVALS ('000)

2006							
<i>March Quarter</i>	53.7	534.8	3 777.1	4 658.4	988.6	275.5	10 288.1
2007							
January	26.3	193.9	1 403.1	1 616.1	328.7	95.4	3 663.4
February	21.0	158.6	1 164.5	1 469.4	343.9	84.5	3 241.9
March	24.5	185.2	1 407.3	1 658.2	375.2	97.7	3 747.9
<i>March Quarter</i>	71.7	537.7	3 974.8	4 743.7	1 047.8	277.5	10 653.2

AVERAGE LENGTH OF STAY (days)

2006							
<i>March Quarter</i>	1.7	1.7	2.0	2.5	2.5	2.1	2.3
2007							
January	1.6	1.7	2.1	2.8	2.8	2.4	2.4
February	1.6	1.7	2.0	2.4	2.4	2.2	2.2
March	1.7	1.7	2.0	2.4	2.4	2.3	2.2
<i>March Quarter</i>	1.6	1.7	2.0	2.5	2.5	2.3	2.3

TAKINGS FROM ACCOMMODATION (\$'000)

2006							
<i>March Quarter</i>	3 537	36 725	389 314	908 767	349 066	34 485	1 721 893
2007							
January	1 597	13 332	157 632	334 903	123 789	13 486	644 740
February	1 433	11 819	132 641	300 427	120 013	11 974	578 308
March	1 787	13 475	161 472	352 024	141 398	14 553	684 710
<i>March Quarter</i>	4 818	38 627	451 746	987 353	385 200	40 014	1 907 758

AVERAGE TAKINGS PER ROOM NIGHT OCCUPIED (\$)

2006							
<i>March Quarter</i>	59.49	71.26	93.71	142.32	224.19	97.95	132.21
2007							
January	70.62	75.03	106.52	153.39	237.79	111.02	143.10
February	70.89	72.02	98.44	145.93	226.95	102.43	136.52
March	73.61	71.68	100.29	150.83	242.18	106.26	140.39
<i>March Quarter</i>	71.79	72.91	101.80	150.15	235.85	106.61	140.08

AVERAGE TAKINGS PER ROOM NIGHT AVAILABLE (\$)

2006							
<i>March Quarter</i>	17.87	32.49	52.97	98.84	168.29	43.81	83.05
2007							
January	21.78	35.88	60.37	106.11	174.38	49.63	89.62
February	21.64	35.05	56.18	105.36	189.30	48.44	89.01
March	24.26	36.04	61.68	111.33	199.18	52.80	94.93
<i>March Quarter</i>	22.59	35.67	59.52	107.68	187.56	50.36	91.26

Period	New South Wales	Victoria	Queensland	South Australia	Western Australia	Tasmania	Northern Territory	Australian Capital Territory	Australia
ESTABLISHMENTS (no.)									
2006									
March Quarter	631	475	445	161	130	126	13	2	1 983
June Quarter	625	471	433	153	132	125	13	2	1 954
September Quarter	623	466	426	150	140	125	14	2	1 946
December Quarter	623	457	423	150	143	125	14	2	1 937
2007									
March Quarter	608	458	421	146	145	126	13	2	1 919
ROOMS (no.)									
2006									
March Quarter	6 225	4 561	4 418	1 521	1 084	1 005	np	np	18 971
June Quarter	6 168	4 513	4 294	1 451	1 113	np	137	np	18 701
September Quarter	6 127	4 464	4 230	1 426	1 178	np	152	np	18 609
December Quarter	6 148	4 405	4 236	1 437	1 211	1 025	np	np	18 631
2007									
March Quarter	6 005	4 400	4 201	1 399	1 241	1 034	np	np	18 441
BED SPACES (no.)									
2006									
March Quarter	18 282	12 993	13 995	4 219	3 426	2 821	np	np	56 164
June Quarter	18 130	12 905	13 506	4 036	3 495	np	370	np	55 350
September Quarter	17 855	12 710	13 191	3 895	3 600	np	459	np	54 614
December Quarter	17 987	12 464	13 302	3 917	3 666	2 832	np	np	54 672
2007									
March Quarter	17 431	12 494	13 184	3 666	3 990	2 887	np	np	54 121
PERSONS EMPLOYED (no.)									
2006									
March Quarter	3 242	2 852	2 515	1 773	995	843	np	np	12 279
June Quarter	3 068	2 733	2 447	1 755	940	np	60	np	11 789
September Quarter	3 130	2 590	2 348	1 674	912	np	64	np	11 477
December Quarter	3 316	2 547	2 310	1 869	991	798	np	np	11 894
2007									
March Quarter	3 058	2 549	2 240	1 826	1 030	784	np	np	11 542
ROOM NIGHTS OCCUPIED ('000)									
2006									
March Quarter	249.2	191.5	200.3	56.2	42.2	55.2	np	np	798.3
June Quarter	230.5	166.2	207.4	50.3	44.6	np	4.3	np	739.7
September Quarter	237.6	153.8	233.0	49.7	49.2	np	6.7	np	758.3
December Quarter	243.7	174.4	215.4	53.1	56.5	42.0	np	np	792.3
2007									
March Quarter	240.0	181.4	192.5	53.1	57.3	55.8	np	np	785.1
ROOM OCCUPANCY RATE (%)									
2006									
March Quarter	45.0	47.0	50.7	41.0	45.1	61.3	np	np	47.3
June Quarter	41.7	40.8	53.3	38.3	44.4	np	34.9	np	43.9
September Quarter	42.3	37.5	59.9	37.9	45.5	np	48.2	np	44.4
December Quarter	43.7	43.6	55.6	40.6	50.8	45.1	np	np	46.7
2007									
March Quarter	45.2	46.4	51.2	42.7	52.4	60.5	np	np	47.9

np not available for publication but included in totals where applicable, unless otherwise indicated

<i>Period</i>	<i>New South Wales</i>	<i>Victoria</i>	<i>Queensland</i>	<i>South Australia</i>	<i>Western Australia</i>	<i>Tasmania</i>	<i>Northern Territory</i>	<i>Australian Capital Territory</i>	<i>Australia</i>
GUEST NIGHTS OCCUPIED ('000)									
2006									
March Quarter	470.9	369.7	370.2	94.3	88.6	110.8	np	np	1 511.2
June Quarter	414.8	302.8	379.0	81.2	92.7	np	7.9	np	1 345.0
September Quarter	435.5	279.6	428.8	82.4	102.2	np	12.8	np	1 392.1
December Quarter	461.6	317.7	402.3	92.3	122.6	81.8	np	np	1 490.5
2007									
March Quarter	458.6	340.2	359.3	90.1	123.2	112.2	np	np	1 492.1
BED OCCUPANCY RATE (%)									
2006									
March Quarter	29.0	31.9	29.6	24.8	30.0	43.8	np	np	30.3
June Quarter	25.6	26.0	31.0	22.2	29.4	np	23.6	np	27.0
September Quarter	26.6	24.0	35.3	23.0	31.0	np	30.2	np	27.8
December Quarter	28.3	28.1	33.1	26.2	36.4	31.8	np	np	30.0
2007									
March Quarter	29.9	30.7	30.4	27.6	35.1	43.7	np	np	31.1
GUEST ARRIVALS ('000)									
2006									
March Quarter	269.3	206.1	185.8	53.5	38.2	65.2	np	np	822.6
June Quarter	241.9	180.2	199.1	47.0	40.4	np	4.5	np	752.9
September Quarter	260.9	170.4	210.6	46.8	47.8	np	8.8	np	776.9
December Quarter	267.6	189.9	200.2	54.3	57.1	48.2	np	np	824.4
2007									
March Quarter	257.6	198.7	175.8	54.7	54.0	65.0	np	np	811.0
AVERAGE LENGTH OF STAY (days)									
2006									
March Quarter	1.7	1.8	2.0	1.8	2.3	1.7	np	np	1.8
June Quarter	1.7	1.7	1.9	1.7	2.3	np	1.7	np	1.8
September Quarter	1.7	1.6	2.0	1.8	2.1	np	1.5	np	1.8
December Quarter	1.7	1.7	2.0	1.7	2.1	1.7	np	np	1.8
2007									
March Quarter	1.8	1.7	2.0	1.6	2.3	1.7	np	np	1.8
TAKINGS FROM ACCOMMODATION (\$'000)									
2006									
March Quarter	23 222	17 628	15 954	4 757	4 769	6 112	np	np	72 685
June Quarter	20 456	14 672	16 586	4 154	4 742	np	311	np	64 684
September Quarter	22 679	14 260	19 100	4 183	5 487	np	602	np	69 022
December Quarter	22 854	16 322	18 283	4 631	6 670	4 658	np	np	73 934
2007									
March Quarter	23 077	17 589	16 375	4 611	6 745	6 653	np	np	75 437
AVERAGE TAKINGS PER ROOM NIGHT OCCUPIED (\$)									
2006									
March Quarter	93.18	92.07	79.65	84.71	113.14	110.68	np	np	91.04
June Quarter	88.74	88.29	79.96	82.51	106.45	np	71.51	np	87.45
September Quarter	95.43	92.74	81.99	84.21	111.56	np	89.27	np	91.02
December Quarter	93.78	93.58	84.87	87.28	118.13	110.94	np	np	93.32
2007									
March Quarter	96.16	96.95	85.07	86.90	117.64	119.32	np	np	96.09

np not available for publication but included in totals where applicable, unless otherwise indicated

<i>Period</i>	<i>New South Wales</i>	<i>Victoria</i>	<i>Queensland</i>	<i>South Australia</i>	<i>Western Australia</i>	<i>Tasmania</i>	<i>Northern Territory</i>	<i>Australian Capital Territory</i>	<i>Australia</i>
AVERAGE TAKINGS PER ROOM NIGHT AVAILABLE (\$)									
2006									
March Quarter	41.94	43.30	40.37	34.75	51.04	67.88	np	np	43.02
June Quarter	36.98	36.06	42.65	31.57	47.22	np	24.94	np	38.37
September Quarter	40.33	34.79	49.08	31.92	50.76	np	43.07	np	40.43
December Quarter	40.95	40.79	47.22	35.46	60.03	49.98	np	np	43.63
2007									
March Quarter	43.50	44.95	43.52	37.07	61.69	72.13	np	np	46.07

np not available for publication but included in totals where applicable, unless otherwise indicated

<i>Period</i>	<i>New South Wales</i>	<i>Victoria</i>	<i>Queensland</i>	<i>South Australia</i>	<i>Western Australia</i>	<i>Tasmania</i>	<i>Northern Territory</i>	<i>Australian Capital Territory</i>	<i>Australia</i>
ESTABLISHMENTS (no.)									
2006									
March Quarter	1 416	786	1 073	251	352	157	94	58	4 187
June Quarter	1 418	795	1 070	254	350	154	94	59	4 194
September Quarter	1 415	791	1 073	251	348	156	94	58	4 186
December Quarter	1 414	796	1 081	250	349	157	91	57	4 195
2007									
March Quarter	1 421	795	1 084	253	345	157	93	57	4 205
ROOMS (no.)									
2006									
March Quarter	68 062	37 087	56 843	11 661	21 036	6 520	6 488	4 901	212 598
June Quarter	68 249	37 339	56 682	11 671	21 082	6 458	6 499	5 055	213 035
September Quarter	68 210	37 532	56 970	11 645	21 172	6 486	6 707	5 046	213 768
December Quarter	68 601	37 716	57 793	11 642	21 262	6 549	6 597	5 012	215 172
2007									
March Quarter	69 071	37 694	58 004	11 735	21 017	6 581	6 650	5 011	215 763
BED SPACES (no.)									
2006									
March Quarter	189 188	100 882	176 667	32 087	57 356	18 962	18 901	13 342	607 385
June Quarter	189 699	101 918	176 640	31 907	57 448	18 673	19 110	14 145	609 540
September Quarter	191 372	102 716	177 553	31 961	57 815	18 789	19 572	14 639	614 417
December Quarter	192 932	102 842	179 214	31 921	58 053	18 945	20 239	14 974	619 120
2007									
March Quarter	193 589	102 946	178 731	32 269	57 413	18 986	20 352	14 901	619 187
PERSONS EMPLOYED (no.)									
2006									
March Quarter	33 477	21 709	31 224	7 201	10 235	4 708	3 013	2 475	114 042
June Quarter	33 754	21 715	31 268	7 312	10 426	4 436	3 137	2 599	114 647
September Quarter	34 132	21 751	32 544	7 450	10 470	4 454	3 479	2 559	116 839
December Quarter	33 617	21 852	32 906	7 226	10 825	4 554	2 929	2 408	116 317
2007									
March Quarter	33 587	21 987	32 221	7 346	10 608	4 604	2 921	2 429	115 703
ROOM NIGHTS OCCUPIED ('000)									
2006									
March Quarter	3 850.9	2 197.4	3 262.2	673.9	1 224.7	428.0	278.3	310.1	12 225.5
June Quarter	3 613.3	2 051.8	3 251.1	632.5	1 198.2	300.5	382.5	318.8	11 748.7
September Quarter	3 872.3	2 091.1	3 845.9	661.5	1 279.4	262.7	468.6	348.4	12 829.8
December Quarter	4 086.1	2 268.0	3 682.3	688.1	1 356.3	368.5	367.8	344.0	13 161.0
2007									
March Quarter	4 055.9	2 307.2	3 383.7	699.7	1 312.7	426.2	311.9	336.4	12 833.8
Year ended March 2006	15 094.6	8 288.8	13 799.9	2 567.8	4 832.5	1 360.2	1 435.1	1 267.8	48 646.6
Year ended March 2007	15 627.6	8 718.1	14 163.0	2 681.9	5 146.5	1 357.9	1 530.7	1 347.6	50 573.3

<i>Period</i>	<i>New South Wales</i>	<i>Victoria</i>	<i>Queensland</i>	<i>South Australia</i>	<i>Western Australia</i>	<i>Tasmania</i>	<i>Northern Territory</i>	<i>Australian Capital Territory</i>	<i>Australia</i>
ROOM OCCUPANCY RATE (%)									
2006									
March Quarter	63.4	66.4	63.8	64.2	64.7	74.0	47.7	70.3	64.2
June Quarter	58.7	61.1	63.0	59.6	62.5	51.1	64.7	69.3	60.9
September Quarter	61.7	60.9	73.4	61.8	65.7	44.1	75.9	75.0	65.3
December Quarter	65.5	66.2	69.3	64.4	69.5	61.2	60.7	74.7	66.9
2007									
March Quarter	66.1	69.0	65.0	66.3	69.9	71.9	52.3	74.6	66.6
Year ended March 2006	61.9	62.4	66.5	59.8	62.8	57.9	60.7	70.4	63.2
Year ended March 2007	63.0	64.3	67.7	63.0	66.9	57.1	63.5	73.4	65.0
GUEST NIGHTS OCCUPIED ('000)									
2006									
March Quarter	6 746.8	3 754.7	6 480.7	1 114.2	2 109.8	826.8	476.9	484.4	21 994.2
June Quarter	6 069.0	3 390.3	6 172.4	1 001.0	1 946.4	534.7	699.0	513.6	20 326.3
September Quarter	6 619.9	3 500.1	7 455.9	1 056.3	2 061.1	448.5	849.2	594.1	22 585.1
December Quarter	7 059.9	3 832.5	7 305.9	1 128.0	2 311.7	646.6	645.1	555.6	23 485.3
2007									
March Quarter	7 112.6	3 931.7	6 610.3	1 168.3	2 211.6	804.3	510.5	549.2	22 898.5
Year ended March 2006	26 182.9	13 900.9	27 240.8	4 144.3	8 165.8	2 485.0	2 483.2	2 062.2	86 665.0
Year ended March 2007	26 861.4	14 654.7	27 544.4	4 353.7	8 530.9	2 434.0	2 703.8	2 212.4	89 295.2
BED OCCUPANCY RATE (%)									
2006									
March Quarter	40.1	41.8	40.8	38.6	40.9	49.2	28.0	40.3	40.5
June Quarter	35.6	37.1	38.4	34.5	37.2	31.5	40.2	39.9	36.9
September Quarter	37.6	37.2	45.7	35.9	38.8	26.0	47.2	44.1	40.0
December Quarter	40.2	41.3	44.4	38.5	43.4	37.1	34.7	40.3	41.5
2007									
March Quarter	41.4	43.3	41.2	40.2	43.1	47.1	28.0	40.9	41.5
Year ended March 2006	38.8	38.7	42.7	35.0	39.0	36.7	36.0	41.5	39.6
Year ended March 2007	38.7	39.7	42.4	37.3	40.6	35.4	37.4	41.3	40.0
GUEST ARRIVALS ('000)									
2006									
March Quarter	3 171.3	1 691.3	2 344.1	533.2	872.6	416.8	237.7	198.4	9 465.5
June Quarter	3 054.2	1 609.2	2 375.8	499.1	806.9	268.2	323.6	222.2	9 159.3
September Quarter	3 289.4	1 657.1	2 772.3	556.0	906.8	236.4	406.8	254.8	10 079.5
December Quarter	3 465.5	1 790.3	2 723.4	574.0	901.7	340.4	318.0	232.7	10 346.0
2007									
March Quarter	3 316.1	1 748.9	2 471.5	540.1	858.6	425.1	251.7	230.1	9 842.1
Year ended March 2006	12 631.0	6 536.2	10 081.1	2 034.0	3 407.8	1 296.6	1 200.7	850.6	38 037.9
Year ended March 2007	13 125.3	6 805.4	10 343.0	2 169.2	3 474.0	1 270.1	1 300.1	939.8	39 426.9

<i>Period</i>	<i>New South Wales</i>	<i>Victoria</i>	<i>Queensland</i>	<i>South Australia</i>	<i>Western Australia</i>	<i>Tasmania</i>	<i>Northern Territory</i>	<i>Australian Capital Territory</i>	<i>Australia</i>
---------------	------------------------	-----------------	-------------------	------------------------	--------------------------	-----------------	---------------------------	-------------------------------------	------------------

AVERAGE LENGTH OF STAY (*days*)

2006									
March Quarter	2.1	2.2	2.8	2.1	2.4	2.0	2.0	2.4	2.3
June Quarter	2.0	2.1	2.6	2.0	2.4	2.0	2.2	2.3	2.2
September Quarter	2.0	2.1	2.7	1.9	2.3	1.9	2.1	2.3	2.2
December Quarter	2.0	2.1	2.7	2.0	2.6	1.9	2.0	2.4	2.3
2007									
March Quarter	2.1	2.2	2.7	2.2	2.6	1.9	2.0	2.4	2.3
Year ended March 2006	2.1	2.1	2.7	2.0	2.4	1.9	2.1	2.4	2.3
Year ended March 2007	2.0	2.2	2.7	2.0	2.5	1.9	2.1	2.4	2.3

TAKINGS FROM ACCOMMODATION (\$'000)

2006									
March Quarter	551 237	326 867	418 231	79 946	148 824	53 282	31 635	39 186	1 649 208
June Quarter	490 052	281 640	411 070	71 800	146 961	35 672	47 974	41 342	1 526 511
September Quarter	551 930	300 201	505 820	74 864	163 219	30 262	68 576	45 619	1 740 492
December Quarter	619 483	330 008	515 418	80 482	181 034	47 726	47 008	45 455	1 866 614
2007									
March Quarter	619 025	349 868	458 620	86 408	177 003	55 236	38 181	47 979	1 832 321
Year ended March 2006	2 084 682	1 139 480	1 733 261	285 404	573 658	161 764	178 904	156 220	6 313 374
Year ended March 2007	2 280 490	1 261 719	1 890 928	313 553	668 218	168 896	201 739	180 395	6 965 938

AVERAGE TAKINGS PER ROOM NIGHT OCCUPIED (\$)

2006									
March Quarter	143.14	148.75	128.21	118.63	121.52	124.50	113.67	126.38	134.90
June Quarter	135.62	137.27	126.44	113.51	122.65	118.70	125.44	129.69	129.93
September Quarter	142.53	143.56	131.52	113.18	127.58	115.18	146.35	130.95	135.66
December Quarter	151.61	145.51	139.97	116.96	133.48	129.52	127.83	132.13	141.83
2007									
March Quarter	152.62	151.64	135.54	123.49	134.84	129.61	122.40	142.61	142.77
Year ended March 2006	138.11	137.47	125.60	111.15	118.71	118.93	124.66	123.22	129.78
Year ended March 2007	145.93	144.72	133.51	116.92	129.84	124.38	131.79	133.86	137.74

AVERAGE TAKINGS PER ROOM NIGHT AVAILABLE (\$)

2006									
March Quarter	90.75	98.74	81.77	76.18	78.65	92.15	54.18	88.84	86.60
June Quarter	79.64	83.86	79.72	67.60	76.62	60.70	81.12	89.87	79.14
September Quarter	87.97	87.43	96.54	69.91	83.86	50.83	111.14	98.27	88.62
December Quarter	99.27	96.30	97.03	75.33	92.74	79.28	77.57	98.63	94.90
2007									
March Quarter	100.84	104.58	88.07	81.81	94.21	93.26	64.02	106.39	95.10
Year ended March 2006	85.43	85.76	83.54	66.52	74.59	68.87	75.66	86.73	82.06
Year ended March 2007	91.93	93.02	90.41	73.65	86.83	71.04	83.68	98.25	89.46

Period	New South Wales	Victoria	Queensland	South Australia	Western Australia	Tasmania	Northern Territory	Australian Capital Territory	Australia
ESTABLISHMENTS (no.)									
2006									
March Quarter	2 047	1 261	1 518	412	482	283	107	60	6 170
June Quarter	2 043	1 266	1 503	407	482	279	107	61	6 148
September Quarter	2 038	1 257	1 499	401	488	281	108	60	6 132
December Quarter	2 037	1 253	1 504	400	492	282	105	59	6 132
2007									
March Quarter	2 029	1 253	1 505	399	490	283	106	59	6 124
ROOMS (no.)									
2006									
March Quarter	74 287	41 648	61 261	13 182	22 120	7 525	np	np	231 569
June Quarter	74 417	41 852	60 976	13 122	22 195	np	6 636	np	231 736
September Quarter	74 337	41 996	61 200	13 071	22 350	np	6 859	np	232 377
December Quarter	74 749	42 121	62 029	13 079	22 473	7 574	np	np	233 803
2007									
March Quarter	75 076	42 094	62 205	13 134	22 258	7 615	np	np	234 204
BED SPACES (no.)									
2006									
March Quarter	207 470	113 875	190 662	36 306	60 782	21 783	np	np	663 549
June Quarter	207 829	114 823	190 146	35 943	60 943	np	19 480	np	664 890
September Quarter	209 227	115 426	190 744	35 856	61 415	np	20 031	np	669 031
December Quarter	210 919	115 306	192 516	35 838	61 719	21 777	np	np	673 792
2007									
March Quarter	211 020	115 440	191 915	35 935	61 403	21 873	np	np	673 308
PERSONS EMPLOYED (no.)									
2006									
March Quarter	36 719	24 561	33 739	8 974	11 230	5 551	np	np	126 321
June Quarter	36 822	24 448	33 715	9 067	11 366	np	3 197	np	126 436
September Quarter	37 262	24 341	34 892	9 124	11 382	np	3 543	np	128 316
December Quarter	36 933	24 399	35 216	9 095	11 816	5 352	np	np	128 211
2007									
March Quarter	36 645	24 536	34 461	9 172	11 638	5 388	np	np	127 245
ROOM NIGHTS OCCUPIED ('000)									
2006									
March Quarter	4 100.1	2 388.8	3 462.5	730.1	1 266.9	483.2	np	np	13 023.8
June Quarter	3 843.8	2 217.9	3 458.5	682.9	1 242.8	np	386.8	np	12 488.3
September Quarter	4 109.9	2 244.9	4 078.8	711.1	1 328.5	np	475.3	np	13 588.1
December Quarter	4 329.8	2 442.4	3 897.7	741.2	1 412.7	410.5	np	np	13 953.3
2007									
March Quarter	4 295.9	2 488.6	3 576.2	752.8	1 370.0	481.9	np	np	13 618.9
ROOM OCCUPANCY RATE (%)									
2006									
March Quarter	61.9	64.3	62.8	61.5	63.8	72.3	np	np	62.8
June Quarter	57.3	58.9	62.4	57.2	61.6	np	64.1	np	59.5
September Quarter	60.1	58.4	72.5	59.2	64.7	np	75.3	np	63.7
December Quarter	63.7	63.8	68.4	61.8	68.5	59.0	np	np	65.3
2007									
March Quarter	64.4	66.6	64.0	63.8	68.9	70.4	np	np	65.1

np not available for publication but included in totals where applicable, unless otherwise indicated

<i>Period</i>	<i>New South Wales</i>	<i>Victoria</i>	<i>Queensland</i>	<i>South Australia</i>	<i>Western Australia</i>	<i>Tasmania</i>	<i>Northern Territory</i>	<i>Australian Capital Territory</i>	<i>Australia</i>
GUEST NIGHTS OCCUPIED ('000)									
2006									
March Quarter	7 217.7	4 124.4	6 850.9	1 208.5	2 198.4	937.6	np	np	23 505.4
June Quarter	6 483.8	3 693.1	6 551.4	1 082.1	2 039.1	np	707.0	np	21 671.3
September Quarter	7 055.4	3 779.7	7 884.7	1 138.7	2 163.3	np	861.9	np	23 977.1
December Quarter	7 521.5	4 150.2	7 708.2	1 220.4	2 434.2	728.4	np	np	24 975.7
2007									
March Quarter	7 571.2	4 271.9	6 969.7	1 258.5	2 334.9	916.5	np	np	24 390.7
BED OCCUPANCY RATE (%)									
2006									
March Quarter	39.1	40.7	39.9	37.0	40.3	48.5	np	np	39.6
June Quarter	34.7	35.9	37.9	33.1	36.8	np	39.9	np	36.1
September Quarter	36.7	35.8	44.9	34.5	38.3	np	46.8	np	39.0
December Quarter	39.2	39.8	43.6	37.2	43.0	36.4	np	np	40.6
2007									
March Quarter	40.5	41.9	40.4	39.0	42.6	46.6	np	np	40.6
GUEST ARRIVALS ('000)									
2006									
March Quarter	3 440.6	1 897.5	2 529.8	586.6	910.8	482.1	np	np	10 288.1
June Quarter	3 296.1	1 789.4	2 574.9	546.1	847.3	np	328.1	np	9 912.1
September Quarter	3 550.3	1 827.5	2 982.9	602.8	954.6	np	415.5	np	10 856.4
December Quarter	3 733.1	1 980.2	2 923.5	628.2	958.8	388.6	np	np	11 170.4
2007									
March Quarter	3 573.8	1 947.6	2 647.3	594.8	912.6	490.1	np	np	10 653.2
AVERAGE LENGTH OF STAY (days)									
2006									
March Quarter	2.1	2.2	2.7	2.1	2.4	1.9	np	np	2.3
June Quarter	2.0	2.1	2.5	2.0	2.4	np	2.2	np	2.2
September Quarter	2.0	2.1	2.6	1.9	2.3	np	2.1	np	2.2
December Quarter	2.0	2.1	2.6	1.9	2.5	1.9	np	np	2.2
2007									
March Quarter	2.1	2.2	2.6	2.1	2.6	1.9	np	np	2.3
TAKINGS FROM ACCOMMODATION (\$'000)									
2006									
March Quarter	574 459	344 495	434 185	84 704	153 593	59 395	np	np	1 721 893
June Quarter	510 508	296 312	427 656	75 954	151 703	np	48 285	np	1 591 196
September Quarter	574 609	314 461	524 920	79 047	168 706	np	69 178	np	1 809 514
December Quarter	642 337	346 331	533 701	85 113	187 704	52 384	np	np	1 940 549
2007									
March Quarter	642 102	367 457	474 995	91 018	183 749	61 890	np	np	1 907 758
AVERAGE TAKINGS PER ROOM NIGHT OCCUPIED (\$)									
2006									
March Quarter	140.11	144.21	125.40	116.02	121.24	122.92	np	np	132.21
June Quarter	132.81	133.60	123.65	111.22	122.07	np	124.83	np	127.41
September Quarter	139.81	140.08	128.69	111.15	126.99	np	145.54	np	133.17
December Quarter	148.35	141.80	136.93	114.83	132.86	127.62	np	np	139.07
2007									
March Quarter	149.47	147.65	132.82	120.91	134.12	128.42	np	np	140.08

np not available for publication but included in totals where applicable, unless otherwise indicated

<i>Period</i>	<i>New South Wales</i>	<i>Victoria</i>	<i>Queensland</i>	<i>South Australia</i>	<i>Western Australia</i>	<i>Tasmania</i>	<i>Northern Territory</i>	<i>Australian Capital Territory</i>	<i>Australia</i>
AVERAGE TAKINGS PER ROOM NIGHT AVAILABLE (\$)									
2006									
March Quarter	86.67	92.67	78.80	71.40	77.35	88.88	np	np	83.05
June Quarter	76.12	78.69	77.12	63.63	75.15	np	79.96	np	75.87
September Quarter	84.05	81.82	93.26	65.77	82.12	np	109.63	np	84.76
December Quarter	94.48	90.50	93.64	70.99	90.98	75.35	np	np	90.83
2007									
March Quarter	96.28	98.34	85.06	77.10	92.42	90.41	np	np	91.26

np not available for publication but included in totals where applicable, unless otherwise indicated

Period	New South Wales	Victoria	Queensland	South Australia	Western Australia	Tasmania	Northern Territory	Australian Capital Territory	Australia
ESTABLISHMENTS (no.)									
2006									
March Quarter	449	363	262	136	177	45	48	3	1 483
June Quarter	448	359	260	136	176	45	48	3	1 475
September Quarter	445	358	260	136	172	45	48	3	1 467
December Quarter	444	356	259	135	172	45	48	3	1 462
2007									
March Quarter	444	357	256	135	168	46	48	3	1 457
ON-SITE VANS (no.)									
2006									
March Quarter	6 630	2 670	1 772	403	1 363	np	np	np	13 277
June Quarter	6 894	2 742	1 703	406	1 278	np	np	np	13 469
September Quarter	6 726	2 703	1 701	330	1 285	np	np	np	13 132
December Quarter	7 025	2 603	1 652	436	1 248	np	np	np	13 320
2007									
March Quarter	7 047	2 563	1 557	412	1 187	np	np	58	13 123
OTHER POWERED SITES (no.)									
2006									
March Quarter	41 498	33 585	19 222	12 027	15 321	np	np	np	128 939
June Quarter	40 632	33 201	19 352	11 917	15 164	np	np	np	127 662
September Quarter	40 211	33 302	19 332	11 838	15 118	np	np	np	127 320
December Quarter	40 291	33 086	19 188	11 653	14 880	np	np	np	126 644
2007									
March Quarter	40 060	33 266	19 155	11 645	14 709	np	np	373	126 445
UNPOWERED SITES (no.)									
2006									
March Quarter	11 380	9 848	5 713	4 404	3 620	np	np	np	39 714
June Quarter	11 481	9 709	5 782	4 468	3 836	np	np	np	40 035
September Quarter	11 294	9 694	5 861	4 484	3 511	np	np	np	39 506
December Quarter	11 063	9 743	5 712	4 491	3 463	np	np	np	39 295
2007									
March Quarter	10 971	9 595	5 720	4 373	3 321	np	np	400	38 895
CABINS FLATS, UNITS AND VILLAS (no.)									
2006									
March Quarter	9 594	4 967	4 054	2 292	2 612	np	np	np	25 255
June Quarter	9 635	4 912	4 116	2 316	2 574	np	np	np	25 309
September Quarter	9 574	4 935	4 238	2 299	2 589	np	np	np	25 381
December Quarter	9 597	4 974	4 299	2 321	2 646	np	np	np	25 613
2007									
March Quarter	10 027	4 957	4 283	2 383	2 621	np	np	105	26 038
TOTAL CAPACITY (no.)									
2006									
March Quarter	69 102	51 070	30 761	19 126	22 916	np	np	np	207 185
June Quarter	68 642	50 564	30 953	19 107	22 852	np	np	np	206 475
September Quarter	67 805	50 634	31 132	18 951	22 503	np	np	np	205 339
December Quarter	67 976	50 406	30 851	18 901	22 237	np	np	np	204 872
2007									
March Quarter	68 105	50 381	30 715	18 813	21 838	np	np	936	204 501

np not available for publication but included in totals where applicable, unless otherwise indicated

(a) Comprising establishments with 40 or more powered sites and cabins, flats, units and villas.

Period	New South Wales	Victoria	Queensland	South Australia	Western Australia	Tasmania	Northern Territory	Australian Capital Territory	Australia
PERSONS EMPLOYED (no.)									
2006									
March Quarter	2 885	1 729	1 372	751	1 082	np	np	np	8 636
June Quarter	2 775	1 597	1 404	736	1 134	np	np	np	8 496
September Quarter	2 767	1 511	1 429	775	1 138	np	np	np	8 509
December Quarter	2 886	1 698	1 401	830	1 120	np	np	np	8 830
2007									
March Quarter	2 869	1 667	1 377	831	1 127	np	np	82	8 793
SITES OCCUPIED BY LONG-TERM GUESTS (no.)									
2006									
March Quarter	6 447	3 146	4 855	1 059	2 706	np	np	np	19 156
June Quarter	6 240	2 908	4 874	1 047	2 918	np	np	np	18 985
September Quarter	6 184	2 736	4 972	1 062	3 023	np	np	np	18 957
December Quarter	6 155	2 757	4 564	1 029	2 816	np	np	np	18 187
2007									
March Quarter	6 165	2 803	4 614	1 020	2 833	np	np	150	18 346
OTHER SITES PERMANENTLY RESERVED (no.)									
2006									
March Quarter	19 889	14 816	963	2 252	1 861	np	np	np	40 624
June Quarter	19 463	14 790	925	2 186	1 969	np	np	np	40 240
September Quarter	19 666	15 197	1 004	2 202	1 899	np	np	np	40 912
December Quarter	19 519	14 897	1 049	2 159	1 848	np	np	np	40 410
2007									
March Quarter	19 341	14 918	957	2 143	1 883	np	np	5	40 149
SITE NIGHTS OCCUPIED ('000)									
2006									
March Quarter	3 623.1	2 436.1	1 032.5	736.9	848.9	np	np	np	9 032.9
June Quarter	3 287.6	2 054.0	1 351.2	627.8	953.8	np	np	np	8 729.2
September Quarter	3 270.5	1 959.6	1 705.9	564.8	1 078.1	np	np	np	9 124.9
December Quarter	3 474.2	2 169.0	1 219.4	655.4	876.8	np	np	np	8 757.4
2007									
March Quarter	3 664.1	2 439.5	1 100.0	730.4	858.9	np	np	32.3	9 158.4
SITE OCCUPANCY RATE (%)									
2006									
March Quarter	58.3	53.0	37.4	42.8	41.2	np	np	np	48.5
June Quarter	52.7	45.6	48.0	36.1	45.9	np	np	np	46.8
September Quarter	52.5	44.4	59.7	32.5	52.1	np	np	np	49.0
December Quarter	55.6	47.2	43.0	37.7	43.1	np	np	np	46.6
2007									
March Quarter	59.8	53.9	39.9	43.3	44.2	np	np	38.4	50.0

np not available for publication but included in totals where applicable, unless otherwise indicated

(a) Comprising establishments with 40 or more powered sites and cabins, flats, units and villas.

<i>Period</i>	<i>New South Wales</i>	<i>Victoria</i>	<i>Queensland</i>	<i>South Australia</i>	<i>Western Australia</i>	<i>Tasmania</i>	<i>Northern Territory</i>	<i>Australian Capital Territory</i>	<i>Australia</i>
TAKINGS FROM ACCOMMODATION (\$'000)									
2006									
March Quarter	76 700	40 057	24 147	16 699	21 627	np	np	np	189 208
June Quarter	56 011	26 584	35 126	13 256	23 472	np	np	np	168 334
September Quarter	55 972	27 461	44 969	12 152	25 903	np	np	np	182 011
December Quarter	73 366	34 320	34 646	15 726	23 358	np	np	np	191 194
2007									
March Quarter	81 640	40 934	29 659	18 265	22 931	np	np	1 198	204 863

np not available for publication but included in totals where applicable, unless otherwise indicated

(a) Comprising establishments with 40 or more powered sites and cabins, flats, units and villas.

Period	New South Wales	Victoria	Queensland	South Australia	Western Australia	Tasmania	Northern Territory	Australian Capital Territory	Australia
ESTABLISHMENTS (no.)									
2006									
March Quarter	78	44	74	9	25	1	4	—	235
June Quarter	78	44	74	9	26	1	3	—	235
September Quarter	78	43	74	8	26	1	3	—	233
December Quarter	78	44	74	8	26	1	3	—	234

2007									
March Quarter	76	44	75	8	26	1	2	—	232

ON-SITE VANS (no.)

2006									
March Quarter	1 223	442	2 072	159	342	np	np	—	4 254
June Quarter	1 261	429	2 047	159	375	np	np	—	4 287
September Quarter	1 266	429	1 992	159	377	np	np	—	4 240
December Quarter	1 233	384	1 991	161	377	np	np	—	4 163

2007									
March Quarter	1 188	376	1 923	162	374	np	np	—	4 032

OTHER POWERED SITES (no.)

2006									
March Quarter	6 009	3 675	4 768	811	2 126	np	np	—	17 764
June Quarter	5 920	3 753	4 806	802	2 135	np	np	—	17 743
September Quarter	6 006	3 690	4 737	692	2 072	np	np	—	17 524
December Quarter	5 963	3 783	4 829	685	2 043	np	np	—	17 630

2007									
March Quarter	5 893	3 768	5 103	688	2 047	np	np	—	17 754

UNPOWERED SITES (no.)

2006									
March Quarter	838	353	463	121	218	np	np	—	2 074
June Quarter	891	353	447	121	188	np	np	—	2 081
September Quarter	842	363	507	121	181	np	np	—	2 085
December Quarter	865	356	490	127	178	np	np	—	2 097

2007									
March Quarter	813	355	492	127	179	np	np	—	2 037

CABINS FLATS, UNITS AND VILLAS (no.)

2006									
March Quarter	2 219	1 369	1 736	233	608	np	np	—	6 213
June Quarter	2 275	1 320	1 785	254	604	np	np	—	6 286
September Quarter	2 208	1 293	1 814	251	674	np	np	—	6 288
December Quarter	2 239	1 329	1 845	256	690	np	np	—	6 407

2007									
March Quarter	2 153	1 343	1 785	253	688	np	np	—	6 264

— nil or rounded to zero (including null cells)

np not available for publication but included in totals where applicable, unless otherwise indicated

(a) Comprising establishments with 40 or more powered sites and cabins, flats, units and villas.

<i>Period</i>	<i>New South Wales</i>	<i>Victoria</i>	<i>Queensland</i>	<i>South Australia</i>	<i>Western Australia</i>	<i>Tasmania</i>	<i>Northern Territory</i>	<i>Australian Capital Territory</i>	<i>Australia</i>
TOTAL CAPACITY (no.)									
2006									
March Quarter	10 289	5 839	9 039	1 324	3 294	np	np	—	30 305
June Quarter	10 347	5 855	9 085	1 336	3 302	np	np	—	30 397
September Quarter	10 322	5 775	9 050	1 223	3 304	np	np	—	30 137
December Quarter	10 300	5 852	9 155	1 229	3 288	np	np	—	30 297
2007									
March Quarter	10 047	5 842	9 303	1 230	3 288	np	np	—	30 087
PERSONS EMPLOYED (no.)									
2006									
March Quarter	423	233	449	47	147	np	np	—	1 320
June Quarter	415	222	438	47	154	np	np	—	1 290
September Quarter	432	220	442	53	153	np	np	—	1 315
December Quarter	441	229	437	57	156	np	np	—	1 334
2007									
March Quarter	412	225	446	52	150	np	np	—	1 297
SITES OCCUPIED BY LONG-TERM GUESTS (no.)									
2006									
March Quarter	5 479	3 216	6 070	684	1 987	np	np	—	17 594
June Quarter	5 253	3 159	6 048	638	1 946	np	np	—	17 165
September Quarter	5 163	3 147	6 070	665	1 914	np	np	—	17 079
December Quarter	5 205	3 101	6 141	657	1 907	np	np	—	17 133
2007									
March Quarter	5 087	3 106	6 063	668	1 909	np	np	—	16 896
OTHER SITES PERMANENTLY RESERVED (no.)									
2006									
March Quarter	855	332	263	—	21	np	np	—	1 567
June Quarter	848	316	269	1	10	np	np	—	1 511
September Quarter	918	327	374	38	10	np	np	—	1 734
December Quarter	961	371	377	38	22	np	np	—	1 836
2007									
March Quarter	965	318	370	1	18	np	np	—	1 770
SITE NIGHTS OCCUPIED ('000)									
2006									
March Quarter	692.5	405.5	653.1	80.6	221.0	np	np	—	2 086.6
June Quarter	666.8	365.3	679.5	76.1	223.1	np	np	—	2 036.6
September Quarter	676.8	367.7	697.4	78.4	241.5	np	np	—	2 090.4
December Quarter	693.0	375.8	683.6	75.5	243.4	np	np	—	2 096.1
2007									
March Quarter	673.5	395.2	676.7	74.9	243.7	np	np	—	2 089.8

— nil or rounded to zero (including null cells)

np not available for publication but included in totals where applicable, unless otherwise indicated

(a) Comprising establishments with 40 or more powered sites and cabins, flats, units and villas.

<i>Period</i>	<i>New South Wales</i>	<i>Victoria</i>	<i>Queensland</i>	<i>South Australia</i>	<i>Western Australia</i>	<i>Tasmania</i>	<i>Northern Territory</i>	<i>Australian Capital Territory</i>	<i>Australia</i>
SITE OCCUPANCY RATE (%)									
2006									
March Quarter	74.8	77.4	80.3	67.7	74.6	np	np	—	76.6
June Quarter	70.8	68.6	82.2	62.6	74.2	np	np	—	73.6
September Quarter	71.3	69.2	83.8	69.6	79.5	np	np	—	75.4
December Quarter	73.1	69.8	81.2	66.8	80.5	np	np	—	75.2
2007									
March Quarter	74.5	75.2	80.8	67.6	82.4	np	np	—	77.2
TAKINGS FROM ACCOMMODATION (\$'000)									
2006									
March Quarter	12 595	6 270	12 021	1 377	4 130	np	np	—	36 819
June Quarter	10 659	5 172	12 582	1 477	4 654	np	np	—	34 989
September Quarter	11 130	6 305	13 617	1 586	5 059	np	np	—	38 378
December Quarter	12 528	6 192	13 689	1 567	5 602	np	np	—	39 960
2007									
March Quarter	12 731	6 346	13 032	1 475	5 158	np	np	—	39 148
—	nil or rounded to zero (including null cells)			(a) Comprising establishments with 40 or more powered sites and					
np	not available for publication but included in totals where applicable, unless otherwise indicated			cabins, flats, units and villas.					

Period	New South Wales	Victoria	Queensland	South Australia	Western Australia	Tasmania	Northern Territory	Australian Capital Territory	Australia
ESTABLISHMENTS (no.)									
2006									
March Quarter	527	407	336	145	202	46	52	3	1 718
June Quarter	526	403	334	145	202	46	51	3	1 710
September Quarter	523	401	334	144	198	46	51	3	1 700
December Quarter	522	400	333	143	198	46	51	3	1 696
2007									
March Quarter	520	401	331	143	194	47	50	3	1 689
ON-SITE VANS (no.)									
2006									
March Quarter	7 853	3 112	3 844	562	1 705	292	np	np	17 531
June Quarter	8 155	3 171	3 750	565	1 653	np	133	np	17 756
September Quarter	7 992	3 132	3 693	489	1 662	np	152	np	17 372
December Quarter	8 258	2 987	3 643	597	1 625	np	121	np	17 483
2007									
March Quarter	8 235	2 939	3 480	574	1 561	198	110	58	17 155
OTHER POWERED SITES (no.)									
2006									
March Quarter	47 507	37 260	23 990	12 838	17 447	2 809	np	np	146 703
June Quarter	46 552	36 954	24 158	12 719	17 299	np	4 513	np	145 405
September Quarter	46 217	36 992	24 069	12 530	17 190	np	4 526	np	144 844
December Quarter	46 254	36 869	24 017	12 338	16 923	np	4 586	np	144 274
2007									
March Quarter	45 953	37 034	24 258	12 333	16 756	2 995	4 497	373	144 199
UNPOWERED SITES (no.)									
2006									
March Quarter	12 218	10 201	6 176	4 525	3 838	1 727	np	np	41 788
June Quarter	12 372	10 062	6 229	4 589	4 024	np	2 714	np	42 116
September Quarter	12 136	10 057	6 368	4 605	3 692	np	2 635	np	41 591
December Quarter	11 928	10 099	6 202	4 618	3 641	np	2 791	np	41 392
2007									
March Quarter	11 784	9 950	6 212	4 500	3 500	1 706	2 880	400	40 932
CABINS FLATS, UNITS AND VILLAS (no.)									
2006									
March Quarter	11 813	6 336	5 790	2 525	3 220	671	np	np	31 468
June Quarter	11 910	6 232	5 901	2 570	3 178	np	1 026	np	31 595
September Quarter	11 782	6 228	6 052	2 550	3 263	np	1 007	np	31 669
December Quarter	11 836	6 303	6 144	2 577	3 336	np	1 025	np	32 020
2007									
March Quarter	12 180	6 300	6 068	2 636	3 309	705	999	105	32 302

np not available for publication but included in totals where applicable, unless otherwise indicated

(a) Comprising establishments with 40 or more powered sites and cabins, flats, units and villas.

<i>Period</i>	<i>New South Wales</i>	<i>Victoria</i>	<i>Queensland</i>	<i>South Australia</i>	<i>Western Australia</i>	<i>Tasmania</i>	<i>Northern Territory</i>	<i>Australian Capital Territory</i>	<i>Australia</i>
TOTAL CAPACITY (no.)									
2006									
March Quarter	79 391	56 909	39 800	20 450	26 210	5 499	np	np	237 490
June Quarter	78 989	56 419	40 038	20 443	26 154	np	8 386	np	236 872
September Quarter	78 127	56 409	40 182	20 174	25 807	np	8 320	np	235 476
December Quarter	78 276	56 258	40 006	20 130	25 525	np	8 523	np	235 169
2007									
March Quarter	78 152	56 223	40 018	20 043	25 126	5 604	8 486	936	234 588
PERSONS EMPLOYED (no.)									
2006									
March Quarter	3 308	1 962	1 821	798	1 229	270	np	np	9 956
June Quarter	3 190	1 819	1 842	783	1 288	np	541	np	9 786
September Quarter	3 199	1 731	1 871	828	1 291	np	574	np	9 824
December Quarter	3 327	1 927	1 838	887	1 276	np	539	np	10 164
2007									
March Quarter	3 281	1 892	1 823	883	1 277	299	553	82	10 090
SITES OCCUPIED BY LONG-TERM GUESTS (no.)									
2006									
March Quarter	11 926	6 362	10 925	1 743	4 693	290	np	np	36 750
June Quarter	11 493	6 067	10 922	1 685	4 864	np	676	np	36 150
September Quarter	11 347	5 883	11 042	1 727	4 937	np	654	np	36 036
December Quarter	11 360	5 858	10 705	1 686	4 723	np	559	np	35 320
2007									
March Quarter	11 252	5 909	10 677	1 688	4 742	305	519	150	35 242
OTHER SITES PERMANENTLY RESERVED (no.)									
2006									
March Quarter	20 744	15 148	1 226	2 252	1 882	919	np	np	42 191
June Quarter	20 311	15 106	1 194	2 187	1 979	np	8	np	41 751
September Quarter	20 584	15 524	1 378	2 240	1 909	np	17	np	42 646
December Quarter	20 480	15 268	1 426	2 197	1 870	np	19	np	42 246
2007									
March Quarter	20 306	15 236	1 327	2 144	1 901	991	9	5	41 919
SITE NIGHTS OCCUPIED ('000)									
2006									
March Quarter	4 315.5	2 841.6	1 685.6	817.5	1 069.9	246.6	np	np	11 119.5
June Quarter	3 954.4	2 419.3	2 030.8	703.9	1 176.8	np	288.7	np	10 765.8
September Quarter	3 947.3	2 327.3	2 403.3	643.1	1 319.6	np	401.6	np	11 215.3
December Quarter	4 167.1	2 544.8	1 903.0	730.9	1 120.2	np	167.1	np	10 853.5
2007									
March Quarter	4 337.6	2 834.7	1 776.7	805.2	1 102.6	242.1	116.9	32.3	11 248.2

np not available for publication but included in totals where applicable, unless otherwise indicated

(a) Comprising establishments with 40 or more powered sites and cabins, flats, units and villas.

<i>Period</i>	<i>New South Wales</i>	<i>Victoria</i>	<i>Queensland</i>	<i>South Australia</i>	<i>Western Australia</i>	<i>Tasmania</i>	<i>Northern Territory</i>	<i>Australian Capital Territory</i>	<i>Australia</i>
---------------	------------------------	-----------------	-------------------	------------------------	--------------------------	-----------------	---------------------------	-------------------------------------	------------------

SITE OCCUPANCY RATE (%)

2006									
March Quarter	60.4	55.5	47.1	44.4	45.4	50.3	np	np	52.1
June Quarter	55.1	48.0	55.8	37.8	49.4	np	37.8	np	50.2
September Quarter	55.0	47.1	65.1	34.7	55.6	np	52.5	np	52.5
December Quarter	57.9	49.6	51.7	39.5	47.9	np	21.3	np	50.3
2007									
March Quarter	61.7	56.1	49.4	44.8	49.2	48.9	16.0	38.4	53.5

TAKINGS FROM ACCOMMODATION (\$'000)

2006									
March Quarter	89 294	46 328	36 168	18 076	25 758	6 254	np	np	226 027
June Quarter	66 670	31 756	47 708	14 733	28 125	np	9 974	np	203 323
September Quarter	67 102	33 766	58 586	13 738	30 962	np	12 865	np	220 388
December Quarter	85 894	40 513	48 335	17 293	28 960	np	4 807	np	231 153
2007									
March Quarter	94 371	47 280	42 691	19 739	28 089	6 522	4 121	1 198	244 010

np not available for publication but included in totals where applicable, unless otherwise indicated

(a) Comprising establishments with 40 or more powered sites and cabins, flats, units and villas.

Period	New South Wales	Victoria	Queensland	South Australia	Western Australia	Tasmania	Northern Territory	Australian Capital Territory	Australia
LETTING ENTITIES (a) (no.)									
2006									
March Quarter	98	16	41	8	2	1	—	—	166
June Quarter	97	16	40	8	2	1	—	—	164
September Quarter	97	16	40	8	2	1	—	—	164
December Quarter	96	15	39	8	2	1	—	—	161
2007									
March Quarter	95	16	36	8	2	1	—	—	158
SINGLE BEDROOM HOLIDAY FLATS, UNITS AND HOUSES (no.)									
2006									
March Quarter	392	100	158	np	np	np	—	—	664
June Quarter	392	51	145	9	np	np	—	—	601
September Quarter	405	54	163	np	np	np	—	—	636
December Quarter	413	53	156	np	np	np	—	—	637
2007									
March Quarter	414	52	154	np	np	np	—	—	637
MULTIPLE BEDROOM HOLIDAY FLATS, UNITS AND HOUSES (no.)									
2006									
March Quarter	7 808	1 761	3 002	np	np	np	—	—	13 490
June Quarter	7 542	1 715	2 992	736	np	np	—	—	13 141
September Quarter	7 429	1 667	2 877	np	np	np	—	—	12 865
December Quarter	7 500	1 665	2 970	np	np	np	—	—	13 041
2007									
March Quarter	7 585	1 711	2 902	np	np	np	—	—	13 106
TOTAL HOLIDAY FLATS, UNITS AND HOUSES (no.)									
2006									
March Quarter	8 200	1 861	3 160	np	np	np	—	—	14 154
June Quarter	7 934	1 766	3 137	745	np	np	—	—	13 742
September Quarter	7 834	1 721	3 040	np	np	np	—	—	13 501
December Quarter	7 913	1 718	3 126	np	np	np	—	—	13 678
2007									
March Quarter	7 999	1 763	3 056	np	np	np	—	—	13 743
BED SPACES (no.)									
2006									
March Quarter	43 543	11 725	14 985	np	np	np	—	—	76 305
June Quarter	42 353	12 106	14 698	5 263	np	np	—	—	75 441
September Quarter	42 764	12 140	14 571	np	np	np	—	—	75 757
December Quarter	43 563	11 601	15 359	np	np	np	—	—	76 905
2007									
March Quarter	43 637	12 098	14 927	np	np	np	—	—	77 033
UNIT NIGHTS OCCUPIED ('000)									
2006									
March Quarter	279.2	21.7	159.2	np	np	np	—	—	492.6
June Quarter	177.7	9.3	111.2	np	np	np	—	—	313.1
September Quarter	172.9	8.5	145.8	np	np	np	—	—	339.5
December Quarter	228.8	9.8	152.8	np	np	np	—	—	407.4
2007									
March Quarter	263.5	19.6	138.6	np	np	np	—	—	449.1

— nil or rounded to zero (including null cells)

np not available for publication but included in totals where applicable, unless otherwise indicated

(a) The number of managers, owners or real estate agents with 15 or more self-contained units.

<i>Period</i>	<i>New South Wales</i>	<i>Victoria</i>	<i>Queensland</i>	<i>South Australia</i>	<i>Western Australia</i>	<i>Tasmania</i>	<i>Northern Territory</i>	<i>Australian Capital Territory</i>	<i>Australia</i>
UNIT OCCUPANCY RATE (%)									
2006									
March Quarter	37.8	13.0	56.0	np	np	np	—	—	38.7
June Quarter	24.6	5.8	39.0	np	np	np	—	—	25.0
September Quarter	24.0	5.4	54.2	np	np	np	—	—	27.6
December Quarter	31.4	6.2	53.1	np	np	np	—	—	32.4
2007									
March Quarter	36.6	12.7	50.4	np	np	np	—	—	36.4
UNIT LETTINGS ('000)									
2006									
March Quarter	43.5	4.9	28.2	np	np	np	—	—	81.7
June Quarter	31.1	3.4	22.2	np	np	np	—	—	59.5
September Quarter	28.5	4.5	25.8	np	np	np	—	—	61.3
December Quarter	42.1	2.8	38.0	np	np	np	—	—	87.6
2007									
March Quarter	39.0	4.7	29.1	np	np	np	—	—	77.6
AVERAGE LENGTH OF STAY (<i>days</i>)									
2006									
March Quarter	6.4	4.5	5.7	np	np	np	—	—	6.0
June Quarter	5.7	2.7	5.0	np	np	np	—	—	5.3
September Quarter	6.1	1.9	5.7	np	np	np	—	—	5.5
December Quarter	5.4	3.5	4.0	np	np	np	—	—	4.7
2007									
March Quarter	6.8	4.2	4.8	np	np	np	—	—	5.8
TAKINGS FROM ACCOMMODATION (\$'000)									
2006									
March Quarter	31 269	3 166	14 313	np	np	np	—	—	52 386
June Quarter	14 844	998	9 847	np	np	np	—	—	27 187
September Quarter	15 506	1 573	13 782	np	np	np	—	—	32 234
December Quarter	23 372	1 135	15 600	np	np	np	—	—	41 800
2007									
March Quarter	30 960	2 789	13 315	np	np	np	—	—	50 314

— nil or rounded to zero (including null cells)

np not available for publication but included in totals where applicable, unless otherwise indicated

Period	New South Wales	Victoria	Queensland	South Australia	Western Australia	Tasmania	Northern Territory	Australian Capital Territory	Australia
LETTING ENTITIES (a) (no.)									
2006									
March Quarter	56	17	306	7	20	7	2	3	418
June Quarter	56	17	303	7	20	7	2	3	415
September Quarter	56	17	306	7	20	7	2	3	418
December Quarter	56	18	304	7	21	7	2	3	418
2007									
March Quarter	56	18	309	7	19	7	2	3	421
SINGLE BEDROOM HOLIDAY FLATS, UNITS AND HOUSES (no.)									
2006									
March Quarter	447	250	3 107	np	np	np	np	np	4 383
June Quarter	453	263	2 896	98	np	np	np	59	4 190
September Quarter	416	277	2 800	np	np	np	np	np	4 097
December Quarter	419	283	2 812	np	np	np	np	np	4 119
2007									
March Quarter	426	279	2 932	np	np	np	np	np	4 241
MULTIPLE BEDROOM HOLIDAY FLATS, UNITS AND HOUSES (no.)									
2006									
March Quarter	1 047	566	7 457	np	np	np	np	np	10 177
June Quarter	1 035	558	7 588	149	np	np	np	110	10 349
September Quarter	1 050	562	7 564	np	np	np	np	np	10 343
December Quarter	1 066	584	7 537	np	np	np	np	np	10 433
2007									
March Quarter	1 065	600	7 748	np	np	np	np	np	10 562
TOTAL HOLIDAY FLATS, UNITS AND HOUSES (no.)									
2006									
March Quarter	1 494	816	10 564	np	np	np	np	np	14 560
June Quarter	1 488	821	10 484	247	np	np	np	169	14 539
September Quarter	1 466	839	10 364	np	np	np	np	np	14 440
December Quarter	1 485	867	10 349	np	np	np	np	np	14 552
2007									
March Quarter	1 491	879	10 680	np	np	np	np	np	14 803
BED SPACES (no.)									
2006									
March Quarter	6 477	3 424	40 572	np	np	np	np	np	58 849
June Quarter	6 458	3 423	40 175	953	np	np	np	976	58 745
September Quarter	6 287	3 462	40 356	np	np	np	np	np	58 780
December Quarter	6 551	3 623	40 262	np	np	np	np	np	59 430
2007									
March Quarter	6 506	3 647	41 268	np	np	np	np	np	59 971

np not available for publication but included in totals where applicable, unless otherwise indicated

(a) The number of owners, managers or real estate agents with 15 or more self-contained units.

<i>Period</i>	<i>New South Wales</i>	<i>Victoria</i>	<i>Queensland</i>	<i>South Australia</i>	<i>Western Australia</i>	<i>Tasmania</i>	<i>Northern Territory</i>	<i>Australian Capital Territory</i>	<i>Australia</i>
PERSONS EMPLOYED (no.)									
2006									
March Quarter	454	216	1 308	np	np	np	np	np	2 402
June Quarter	495	228	1 263	55	np	np	np	39	2 395
September Quarter	508	231	1 333	np	np	np	np	np	2 535
December Quarter	518	233	1 289	np	np	np	np	np	2 556
2007									
March Quarter	511	208	1 281	np	np	np	np	np	2 473
UNIT NIGHTS OCCUPIED ('000)									
2006									
March Quarter	86.1	42.0	619.8	np	np	np	np	np	858.2
June Quarter	62.6	38.1	530.9	np	np	np	np	np	728.1
September Quarter	67.3	45.0	691.8	np	np	np	np	np	899.0
December Quarter	82.4	45.9	655.8	np	np	np	np	np	907.3
2007									
March Quarter	86.9	48.0	629.5	np	np	np	np	np	888.1
UNIT OCCUPANCY RATE (%)									
2006									
March Quarter	64.0	61.1	65.2	np	np	np	np	np	65.7
June Quarter	47.1	51.0	55.7	np	np	np	np	np	55.1
September Quarter	50.8	58.4	72.6	np	np	np	np	np	67.8
December Quarter	60.1	63.3	68.9	np	np	np	np	np	68.1
2007									
March Quarter	64.7	65.2	65.5	np	np	np	np	np	67.0
UNIT LETTINGS ('000)									
2006									
March Quarter	29.8	9.7	216.2	np	np	np	np	np	287.0
June Quarter	23.1	10.0	199.8	np	np	np	np	np	259.8
September Quarter	34.0	10.7	218.7	np	np	np	np	np	299.2
December Quarter	30.1	11.5	246.0	np	np	np	np	np	323.8
2007									
March Quarter	29.4	8.8	225.2	np	np	np	np	np	301.1
AVERAGE LENGTH OF STAY (days)									
2006									
March Quarter	2.9	4.3	2.9	np	np	np	np	np	3.0
June Quarter	2.7	3.8	2.7	np	np	np	np	np	2.8
September Quarter	2.0	4.2	3.2	np	np	np	np	np	3.0
December Quarter	2.7	4.0	2.7	np	np	np	np	np	2.8
2007									
March Quarter	3.0	5.4	2.8	np	np	np	np	np	2.9
TAKINGS FROM ACCOMMODATION (\$'000)									
2006									
March Quarter	12 227	5 562	74 633	np	np	np	np	np	103 799
June Quarter	7 646	4 741	58 738	np	np	np	np	np	81 009
September Quarter	9 802	6 903	81 278	np	np	np	np	np	107 934
December Quarter	11 074	5 974	85 984	np	np	np	np	np	116 195
2007									
March Quarter	12 223	6 245	78 555	np	np	np	np	np	110 895

np not available for publication but included in totals where applicable, unless otherwise indicated

Period	New South Wales	Victoria	Queensland	South Australia	Western Australia	Tasmania	Northern Territory	Australian Capital Territory	Australia
LETTING ENTITIES (a) (no.)									
2006									
March Quarter	154	33	347	15	22	8	2	3	584
June Quarter	153	33	343	15	22	8	2	3	579
September Quarter	153	33	346	15	22	8	2	3	582
December Quarter	152	33	343	15	23	8	2	3	579
2007									
March Quarter	151	34	345	15	21	8	2	3	579

SINGLE BEDROOM HOLIDAY FLATS, UNITS AND HOUSES (no.)

2006									
March Quarter	839	350	3 265	106	308	46	np	np	5 047
June Quarter	845	314	3 041	107	345	50	np	np	4 791
September Quarter	821	331	2 963	107	374	46	np	np	4 733
December Quarter	832	336	2 968	108	375	47	np	np	4 756
2007									
March Quarter	840	331	3 086	104	379	51	np	np	4 878

MULTIPLE BEDROOM HOLIDAY FLATS, UNITS AND HOUSES (no.)

2006									
March Quarter	8 855	2 327	10 459	910	852	144	np	np	23 667
June Quarter	8 577	2 273	10 580	885	870	141	np	np	23 490
September Quarter	8 479	2 229	10 441	872	880	144	np	np	23 208
December Quarter	8 566	2 249	10 507	881	949	158	np	np	23 474
2007									
March Quarter	8 650	2 311	10 650	870	862	161	np	np	23 668

TOTAL HOLIDAY FLATS, UNITS AND HOUSES (no.)

2006									
March Quarter	9 694	2 677	13 724	1 016	1 160	190	np	np	28 714
June Quarter	9 422	2 587	13 621	992	1 215	191	np	np	28 281
September Quarter	9 300	2 560	13 404	979	1 254	190	np	np	27 941
December Quarter	9 398	2 585	13 475	989	1 324	205	np	np	28 230
2007									
March Quarter	9 490	2 642	13 736	974	1 241	212	np	np	28 546

BED SPACES (no.)

2006									
March Quarter	50 020	15 149	55 557	5 973	6 230	894	np	np	135 154
June Quarter	48 811	15 529	54 873	6 216	6 522	904	np	np	134 186
September Quarter	49 051	15 602	54 927	6 166	6 564	890	np	np	134 537
December Quarter	50 114	15 224	55 621	6 217	6 843	1 006	np	np	136 335
2007									
March Quarter	50 143	15 745	56 195	6 198	6 414	986	np	np	137 004

np not available for publication but included in totals where applicable, unless otherwise indicated

(a) The number of owners, managers or real estate agents with 15 or more self-contained units.

<i>Period</i>	<i>New South Wales</i>	<i>Victoria</i>	<i>Queensland</i>	<i>South Australia</i>	<i>Western Australia</i>	<i>Tasmania</i>	<i>Northern Territory</i>	<i>Australian Capital Territory</i>	<i>Australia</i>
UNIT NIGHTS OCCUPIED ('000)									
2006									
March Quarter	365.3	63.7	779.0	42.3	69.4	12.9	np	np	1 350.8
June Quarter	240.4	47.5	642.2	22.6	62.8	7.2	np	np	1 041.2
September Quarter	240.2	53.6	837.5	20.1	60.3	6.1	np	np	1 238.5
December Quarter	311.2	55.7	808.5	25.0	85.4	10.1	np	np	1 314.7
2007									
March Quarter	350.4	67.7	768.1	35.5	82.4	14.1	np	np	1 337.2
UNIT OCCUPANCY RATE (%)									
2006									
March Quarter	41.9	27.0	63.1	46.2	66.5	75.7	np	np	52.4
June Quarter	28.1	20.2	51.8	25.0	56.8	41.2	np	np	40.5
September Quarter	28.2	22.7	68.5	22.3	52.3	34.9	np	np	48.4
December Quarter	36.0	24.2	65.2	27.5	70.1	53.4	np	np	50.8
2007									
March Quarter	41.0	29.6	62.2	40.5	73.8	74.1	np	np	52.2
UNIT LETTINGS ('000)									
2006									
March Quarter	73.3	14.6	244.3	7.9	18.6	6.2	np	np	368.7
June Quarter	54.2	13.4	222.0	6.0	16.0	2.7	np	np	319.3
September Quarter	62.6	15.2	244.5	5.5	23.9	3.1	np	np	360.5
December Quarter	72.3	14.4	284.0	8.0	23.8	4.5	np	np	411.4
2007									
March Quarter	68.3	13.6	254.3	7.5	23.9	7.0	np	np	378.7
AVERAGE LENGTH OF STAY (days)									
2006									
March Quarter	5.0	4.4	3.2	5.4	3.7	2.1	np	np	3.7
June Quarter	4.4	3.5	2.9	3.8	3.9	2.6	np	np	3.3
September Quarter	3.8	3.5	3.4	3.6	2.5	2.0	np	np	3.4
December Quarter	4.3	3.9	2.8	3.1	3.6	2.2	np	np	3.2
2007									
March Quarter	5.1	5.0	3.0	4.8	3.5	2.0	np	np	3.5
TAKINGS FROM ACCOMMODATION (\$'000)									
2006									
March Quarter	43 495	8 728	88 946	4 769	7 016	1 315	np	np	156 184
June Quarter	22 490	5 739	68 585	2 313	6 299	651	np	np	108 196
September Quarter	25 308	8 476	95 061	2 046	6 231	531	np	np	140 168
December Quarter	34 447	7 109	101 585	2 662	9 084	1 036	np	np	157 995
2007									
March Quarter	43 183	9 034	91 870	4 340	9 035	1 589	np	np	161 209

np not available for publication but included in totals where applicable, unless otherwise indicated

Period	New South Wales	Victoria	Queensland	South Australia	Western Australia	Tasmania	Northern Territory	Australian Capital Territory	Australia
ESTABLISHMENTS (no.)									
2006									
March Quarter	107	70	127	27	65	24	26	5	451
June Quarter	105	69	123	27	65	22	26	5	442
September Quarter	105	67	118	27	66	22	23	5	433
December Quarter	103	66	118	27	66	21	23	5	429
2007									
March Quarter	102	67	118	27	65	21	22	5	427
BED SPACES (no.)									
2006									
March Quarter	11 669	8 923	13 718	2 337	4 984	1 888	3 571	952	48 042
June Quarter	11 806	8 791	13 580	2 386	5 003	1 626	3 587	953	47 732
September Quarter	11 749	8 837	13 288	2 400	5 305	1 650	3 202	974	47 405
December Quarter	11 522	8 565	13 057	2 403	5 433	1 573	3 128	950	46 631
2007									
March Quarter	11 573	8 727	13 043	2 406	5 355	1 629	3 058	979	46 770
PERSONS EMPLOYED (no.)									
2006									
March Quarter	716	487	1 145	113	322	156	260	82	3 281
June Quarter	714	523	1 193	124	289	133	222	79	3 277
September Quarter	727	472	1 185	114	312	129	227	84	3 250
December Quarter	693	484	1 160	118	331	148	239	98	3 271
2007									
March Quarter	685	475	1 160	111	307	146	242	105	3 231
GUEST NIGHTS OCCUPIED (no.)									
2006									
March Quarter	670 795	414 230	699 028	88 683	253 170	64 593	97 204	36 974	2 324 677
June Quarter	498 803	266 966	665 277	66 114	224 322	27 088	139 612	39 335	1 927 517
September Quarter	511 916	259 589	714 807	63 126	224 526	14 258	190 182	53 242	2 031 646
December Quarter	680 977	348 257	660 697	83 465	283 382	31 148	124 247	43 334	2 255 507
2007									
March Quarter	700 712	438 644	612 772	90 311	302 160	59 665	100 497	46 271	2 351 032
BED OCCUPANCY RATE (%)									
2006									
March Quarter	64.2	52.6	56.6	42.2	56.4	38.0	30.7	43.2	54.1
June Quarter	46.6	34.0	53.9	30.4	49.4	18.3	42.8	45.4	44.6
September Quarter	47.4	32.4	58.8	29.6	46.2	9.4	64.6	59.4	46.9
December Quarter	64.8	45.3	55.3	37.8	56.7	23.8	43.6	49.6	53.2
2007									
March Quarter	67.5	56.4	52.8	41.7	62.7	40.7	38.0	52.5	56.3
GUEST ARRIVALS (no.)									
2006									
March Quarter	235 359	129 114	268 987	29 779	82 486	30 759	41 839	25 149	843 472
June Quarter	158 421	78 558	272 351	24 645	64 774	15 492	68 434	18 938	701 613
September Quarter	192 067	78 822	278 488	25 587	68 647	8 800	90 765	22 186	765 362
December Quarter	185 071	94 166	246 836	30 231	82 855	17 913	61 579	25 980	744 631
2007									
March Quarter	221 122	122 724	264 176	34 474	96 105	30 034	54 296	27 486	850 417

(a) Comprising establishments with 25 or more bed spaces.

<i>Period</i>	<i>New South Wales</i>	<i>Victoria</i>	<i>Queensland</i>	<i>South Australia</i>	<i>Western Australia</i>	<i>Tasmania</i>	<i>Northern Territory</i>	<i>Australian Capital Territory</i>	<i>Australia</i>
---------------	------------------------	-----------------	-------------------	------------------------	--------------------------	-----------------	---------------------------	-------------------------------------	------------------

AVERAGE LENGTH OF STAY (*days*)

2006									
March Quarter	2.9	3.2	2.6	3.0	3.1	2.1	2.3	1.5	2.8
June Quarter	3.1	3.4	2.4	2.7	3.5	1.7	2.0	2.1	2.7
September Quarter	2.7	3.3	2.6	2.5	3.3	1.6	2.1	2.4	2.7
December Quarter	3.7	3.7	2.7	2.8	3.4	1.7	2.0	1.7	3.0
2007									
March Quarter	3.2	3.6	2.3	2.6	3.1	2.0	1.9	1.7	2.8

TAKINGS FROM ACCOMMODATION (\$'000)

2006									
March Quarter	17 761	10 423	13 661	1 813	5 403	1 205	2 076	994	53 337
June Quarter	12 954	6 907	14 272	1 314	4 748	506	3 351	1 084	45 136
September Quarter	13 748	6 925	15 937	1 263	4 952	287	4 572	1 471	49 155
December Quarter	19 016	9 049	14 854	1 730	6 457	644	2 768	1 235	55 751
2007									
March Quarter	18 513	11 293	14 204	1 985	6 622	1 240	2 103	1 400	57 361

(a) Comprising establishments with 25 or more bed spaces.

EXPLANATORY NOTES

- INTRODUCTION**
- 1** This publication presents data from the quarterly Survey of Tourist Accommodation (STA). The STA is a mailout collection that completely enumerates all in-scope accommodation establishments within Australia.
- SCOPE**
- 2** From March quarter 2005, the scope of the STA comprises the following categories of establishments:
- licensed hotels and resorts with facilities and 5 or more rooms
 - motels, private hotels and guest houses with facilities and 5 or more rooms
 - serviced apartments with 5 or more units
 - caravan parks with 40 or more powered sites
 - holiday flats, units and houses of letting entities with 15 or more rooms or units
 - visitor hostels with 25 or more bed spaces.
- 3** With the exception of caravan parks, these establishments provide predominantly short-term non-residential accommodation, i.e. accommodation which is not leased, and which is provided to guests who would generally stay for periods of less than two months. Some of these establishments also provide long-term residential accommodation. The amount of such activity is considered to be insignificant and is included in the data presented in this publication.
- 4** Caravan parks provide either short-term or long-term accommodation. If a caravan park has the majority of sites occupied by paying guests who have stayed continuously for two months or more during the survey period, the caravan park is classified as long-term. Data for caravan parks are presented by short-term and long-term in this publication.
- 5** Previous to March quarter 2005, the scope of the STA comprised:
- licensed hotels and resorts with facilities and 15 or more rooms
 - motels, private hotels and guest houses with facilities and 15 or more rooms
 - serviced apartments with 15 or more units.
- 6** For the four quarters of 2000 and 2003, the scope of the STA was expanded to include:
- caravan parks with 40 or more powered sites
 - holiday flats, units and houses of letting entities with 15 or more rooms or units
 - visitor hostels with 25 or more bed spaces.
- COVERAGE**
- 7** The main source of coverage is from the Australian Automobile Association through AAA Tourism Pty Ltd. This is supplemented by notification of new tourism developments and their likely opening dates in selected guides, major tourism journals and periodicals and newspapers. Periodic comparison with lists of accommodation establishments provided by the various tourism organisations and industry associations is also undertaken.
- TAKINGS FROM ACCOMMODATION**
- 8** From 1 July 2000, takings from accommodation include gross revenue from the provision of accommodation, including GST. Takings from meals are excluded. Where businesses are unable to provide the data inclusive of GST, it is automatically adjusted by the ABS prior to aggregation and release in output.
- STAR GRADING**
- 9** Star grade classifications of establishments are continuously revised by AAA Tourism Pty Ltd. This should be taken into account when making comparisons over time. Any queries regarding the star grading process should be directed to AAA Tourism Pty Ltd on (03) 8601 2200 or email <enquiries@aaatourism.com.au>.
- 10** Data by star grade for states and territories are included in the data cubes that accompany this publication: *Tourist Accommodation, Small Area Data* (cat. no. 8635.0.55.002 for national data and cat. no. 8635.1.55.001 – 8635.8.55.001 for state/territory data).

EXPLANATORY NOTES *continued*

STATISTICAL GEOGRAPHY

11 Small area statistics for 2007 are classified to the Australian Standard Geographical Classification (ASGC), 2006 Edition (cat. no. 1216.0). Data are coded to the statistical local area (SLA) level.

12 These SLA data are aggregated to tourism regions as defined by relevant state and territory tourism organisations. Tourism regions are reviewed annually and are subject to boundary and name changes. Where changes have occurred care should be taken when making comparisons with previously published data at this level.

13 Data by tourism regions are no longer presented in this publication. Small area data are provided in the data cubes that accompany this publication: *Tourist Accommodation, Small Area Data* (cat. no. 8635.0.55.002 for national data and cat. no. 8635.1.55.001 – 8635.8.55.001 for state/territory data).

14 Details of SLAs, the composition of tourism regions and maps of tourism regions are provided in the ABS publication *Tourism Region Maps and Concordance Files, Australia* (cat. no. 9503.0.55.001) available from the ABS web site <www.abs.gov.au>.

DATA QUALITY

15 The survey does not have a sample component and the data are not subject to sampling variability. However, other inaccuracies collectively referred to as non-sampling error may affect the data. These non-sampling errors may arise from a number of sources, including:

- errors in the reporting of data by providers
- errors in the process of capturing data
- imputation for missing data
- definition and classification errors
- incomplete coverage.

16 Every effort has been made to reduce non-sampling error to a minimum by careful design and testing of questionnaires, and efficient operating procedures and systems used to compile statistics.

EXPLANATORY NOTES *continued*

Response rates

17 The response rates for the most recent quarters are shown below:

RESPONSE RATES

<i>Activity</i>	<i>Mar Qtr 2006</i>	<i>Jun Qtr 2006</i>	<i>Sep Qtr 2006</i>	<i>Dec Qtr 2006</i>	<i>Mar Qtr 2007</i>
	%	%	%	%	%
Licensed hotels with facilities					
with 5 to 14 rooms	81.9	85.8	76.5	84.7	86.2
with 15 or more rooms	86.9	90.9	88.6	88.6	92.2
with 5 or more rooms	85.5	89.1	84.3	87.2	90.1
Motels and guest houses					
with 5 to 14 rooms	84.9	90.3	84.9	92.4	91.2
with 15 or more rooms	86.5	91.5	89.3	87.1	89.2
with 5 or more rooms	86.4	91.1	87.9	88.7	89.8
Serviced apartments					
with 5 to 14 rooms	88.1	91.6	88.0	93.8	93.5
with 15 or more rooms	89.0	94.2	93.6	90.9	93.3
with 5 or more rooms	88.8	93.5	92.0	91.7	93.3
Hotels, motels and serviced apartments					
with 5 to 14 rooms	84.7	89.5	83.5	90.9	90.5
with 15 or more rooms	87.1	91.9	90.1	88.2	90.7
with 5 or more rooms	86.6	91.2	88.0	89.0	90.6
Caravan parks	86.6	92.2	90.9	87.8	93.1
Holiday flats, units and houses	89.7	94.1	90.2	91.4	93.1
Visitor hostels	84.0	90.5	91.5	83.7	85.2

Imputation rates

18 Missing data items are replaced by imputed values based on reported data. Average quarterly movements are applied to previously reported data for each non-responding unit to estimate values for missing data items. Only if previously reported data are not available, then data from a similar unit is used as a 'donor' for the missing data items.

EXPLANATORY NOTES *continued*

Imputation rates continued

19 The imputation rates for the most recent quarters are shown below:

IMPUTATION RATES, Nights occupied(a)

	<i>Mar</i> <i>Qtr</i> 2006	<i>Jun</i> <i>Qtr</i> 2006	<i>Sep</i> <i>Qtr</i> 2006	<i>Dec</i> <i>Qtr</i> 2006	<i>Mar</i> <i>Qtr</i> 2007
<i>Activity</i>	%	%	%	%	%
Licensed hotels with facilities					
with 5 to 14 rooms	15.4	13.4	21.9	15.1	12.6
with 15 or more rooms	3.4	2.9	3.4	3.8	1.7
with 5 or more rooms	3.8	3.2	3.9	4.1	2.0
Motels and guest houses					
with 5 to 14 rooms	12.4	7.9	13.7	7.5	7.6
with 15 or more rooms	10.3	7.8	8.4	9.8	7.8
with 5 or more rooms	10.6	7.8	8.9	9.6	7.8
Serviced apartments					
with 5 to 14 rooms	11.4	9.3	11.9	5.0	5.0
with 15 or more rooms	7.0	5.3	3.8	5.4	4.6
with 5 or more rooms	7.2	5.5	4.2	5.4	4.6
Hotels, motels and serviced apartments					
with 5 to 14 rooms	13.8	9.2	15.0	8.4	8.1
with 15 or more rooms	6.8	5.2	5.3	6.3	4.5
with 5 or more rooms	7.1	5.5	5.8	6.4	4.7
Caravan parks	10.9	7.3	7.3	10.8	6.2
Holiday flats, units and houses	7.8	5.6	9.1	6.8	4.7
Visitor hostels	16.3	8.7	8.6	14.6	11.0

(a) Based on room nights for hotels, motels and serviced apartments; site nights for caravan parks; unit nights for holiday flats, units and houses; and guest nights for visitor hostels

IMPUTATION RATES, Takings from accommodation

	<i>Mar</i> <i>Qtr</i> 2006	<i>Jun</i> <i>Qtr</i> 2006	<i>Sep</i> <i>Qtr</i> 2006	<i>Dec</i> <i>Qtr</i> 2006	<i>Mar</i> <i>Qtr</i> 2007
<i>Activity</i>	%	%	%	%	%
Licensed hotels with facilities					
with 5 to 14 rooms	14.4	14.5	21.6	16.2	13.8
with 15 or more rooms	2.5	2.2	2.8	3.7	1.2
with 5 or more rooms	2.7	2.4	3.0	3.9	1.3
Motels and guest houses					
with 5 to 14 rooms	14.7	7.6	13.5	8.2	8.2
with 15 or more rooms	9.6	7.8	7.7	9.3	7.1
with 5 or more rooms	10.1	7.8	8.2	9.2	7.2
Serviced apartments					
with 5 to 14 rooms	12.2	8.8	10.6	5.8	5.2
with 15 or more rooms	6.6	4.5	3.3	4.8	4.0
with 5 or more rooms	6.8	4.7	3.5	4.9	4.1
Hotels, motels and serviced apartments					
with 5 to 14 rooms	15.0	8.9	13.9	8.7	8.2
with 15 or more rooms	5.4	4.4	4.2	5.4	3.4
with 5 or more rooms	5.8	4.5	4.6	5.6	3.6
Caravan parks	9.5	7.0	7.0	10.8	5.1
Holiday flats, units and houses	7.8	5.5	9.1	7.1	4.0
Visitor hostels	11.6	7.7	7.9	13.4	9.3

EXPLANATORY NOTES *continued*

BREAK IN TIME SERIES

20 In June quarter 2003, the ABS identified 132 licensed hotels with facilities, motels and guest houses and serviced apartments with 15 or more rooms which had been operating for a number of quarters but were not on the STA frame. These additional establishments were included in the STA from June quarter 2003.

21 The ABS also identified 74 caravan parks which were operating in the March quarter 2003 but were not on the STA frame. These caravan parks were included in the June, September and December quarter 2003 data, but not in the March quarter 2003 data.

22 The addition of these establishments resulted in a break in time series between March and June quarters 2003. The impact of the break in time series for hotels, motels and serviced apartments is explained in Appendix 1, *Tourist Accommodation, Australia, December quarter 2003* (cat. no. 8635.0). The impact of the break in series for caravan parks is explained in the Appendix of *Tourist Accommodation, Australia, Expanded Scope Collection, Year ended 31 December quarter 2003* (cat. no. 8635.0.55.001). Particular care needs to be taken for all calculations of percentage changes that cross the break in series.

SEASONAL ADJUSTMENT

23 Seasonal adjustment is a means of removing the estimated effects of normal seasonal variation from the original time series so that the effect of other influences on the series may be more clearly recognised. Seasonal adjustment procedures do not aim to remove the irregular or non-seasonal influences which may be present in any particular quarter. Irregular influences that are highly volatile can make it difficult to interpret the movement of the series even after adjustment for seasonal variation, and cannot be assumed to indicate changes in the trend.

24 The way in which seasonally adjusted and trend estimates were calculated changed from a Forward Factor methodology to a Concurrent methodology in March quarter 2003. The Forward Factor method relied on an annual analysis of the original time series to estimate seasonal factors that were to be applied in the forthcoming four quarters. Under this method the projected seasonal factors, or forward factors, were not updated until the next annual analysis. The Concurrent methodology uses the most up to date original time series available at each reference period to estimate seasonal factors thus eliminating the need to use projected seasonal factors.

TREND ESTIMATES

25 Smoothing the seasonally adjusted series reduces the impact of the irregular component of the seasonally adjusted series and creates the trend estimates. The trend estimates are derived by applying a 7-term Henderson moving average to the quarterly seasonally adjusted series. The Henderson moving average used in the middle of the time series is symmetric but, as the end of a time series is approached, asymmetric forms of the symmetric moving average are applied. Unlike the weights of the standard 7-term Henderson moving average, the weights used with the quarterly data have been tailored to suit the particular characteristics of individual series.

26 While these techniques enable trend estimates for the latest period to be produced, the process does result in revisions to the trend estimates in recent quarters, particularly as additional original estimates become available. For further information refer to *Information Paper: A Guide to Interpreting Time Series - Monitoring Trends, 2003* (cat. no. 1349.0) available at the ABS web site <www.abs.gov.au>.

CONFIDENTIALISATION OF DATA

27 Under the Census and Statistics Act, when releasing statistics the ABS is required to do this in a manner that is "not likely" (in a legal sense) to enable the identification of a particular person or organisation. A number of techniques are used to do this, including suppression of information. To ensure provider confidentiality in the Survey of Tourist Accommodation, the ABS uses a computerised process known as Disclosure Avoidance Analysis System (DAAS) to confidentialise the entire tourist accommodation dataset each quarter. This process not only ensures that data are suppressed to ensure individual

EXPLANATORY NOTES *continued*

CONFIDENTIALISATION OF DATA *continued*

establishments cannot be identified, but also suppresses data in other (consequential) cells to ensure data cannot be derived through deduction from the information available.

28 While the scope and coverage of the Survey of Tourist Accommodation has been expanded, priority has been given to maintaining the integrity and continuity of the core collection (hotels, motels and guest houses, and serviced apartments with 15 or more rooms). In order to maximise data released from the core collection series and the new components of the expanded scope collection (hotels, motels and guest houses, and serviced apartments with 5-14 rooms), the 'total' series (5 or more rooms) has been used for any consequential confidentiality required where possible.

29 The DAAS process begins by confidentialising at the Statistical Local Area (SLA) level, then across Tourism regions, then at the state level and finally the national level. If there is an SLA that has been made confidential then another SLA will have to be made confidential within that Tourism region to protect the confidentiality of the providers in the SLA that was originally made confidential. Depending on the number of SLAs in the Tourism region the whole Tourism region may need to be made confidential. As a consequence of this, at least one more Tourism region within a state or territory will also be confidentialised. This may also occur at the state/territory level.

USER AGGREGATION OF DATA

30 The aggregation of data by users across time periods should be undertaken with caution, due to the possibility of non-inclusion of confidentialised data (see the above section for more information about confidentialisation). Where one or more cells contributing to a total have been confidentialised (ie, contains the value of n.p.), the resulting aggregated total will be incorrect. However, some broader levels of data may not be affected by confidentialised cells.

31 Where data can be aggregated (ie, no confidentialised cells are included) for calendar and financial year/s purposes, the data items Establishments, Rooms, Persons employed and Bed spaces should not be aggregated. For these items it is recommended that for calendar years, the value of the December quarter is used, and for financial years, the value of the June quarter is used.

32 Any data items that have been derived from other items collected in the survey cannot be aggregated (ie, all those with labels ending in 'rate' or commencing with 'average'). These items must be re-derived based on the aggregation of each of the quarterly items collected in the survey used in the derivation of the rate or average (see Glossary for formulas).

33 Users are cautioned against deriving any non-standard aggregations (eg, aggregation of selected star gradings such as 4-star and 5-star; aggregation of selected geographical areas such as capital city areas and balance of state; aggregation of selected activities such as hotels and motels combined). This is because data are confidentialised based on the standard data item structure.

EFFECTS OF ROUNDING

34 Where figures have been rounded, discrepancies may occur between totals and the sum of the component items.

RELATED PUBLICATIONS

35 Other ABS publications and products which may be of interest are outlined below. Please note, older publications may no longer be available through ABS bookshops but

EXPLANATORY NOTES *continued*

RELATED PUBLICATIONS

continued

are available through ABS libraries. All publications released from 1998 onwards are available on the ABS web site <www.abs.gov.au>.

Tourist Accommodation, Small Area Data (cat. no. 8635.0.55.002) (data cube for Australia – issued quarterly)

Tourist Accommodation, Small Area Data (cat. no. 8635.1.55.001–8635.8.55.001) (data cubes for each state/territory – issued quarterly)

Tourism Region Maps and Concordance Files, Australia (cat. no. 9503.0.55.001) (annual)

Tourist Accommodation, Australia, Expanded Scope Collection (cat. no. 8635.0.55.001) (irregular)

Short-term Visitor Arrivals Estimates, Australia (cat. no. 3401.0.55.001) (issued monthly)

Overseas Arrivals and Departures, Australia (cat. no. 3401.0) (issued monthly)

Australian National Accounts, Tourism Satellite Account (cat. no. 5249.0) (annual)

36 Current publications and other products released by the ABS are listed in the *Catalogue of Publications and Products* (cat. no. 1101.0). The catalogue is available from any ABS office or the ABS web site <www.abs.gov.au>. The ABS also issues a daily Release Advice on the web site which details products to be released in the week ahead.

ABS DATA AVAILABLE ON REQUEST

37 As well as the statistics included in this publication, the ABS has other relevant data available on request. Inquiries should be made to the National Information and Referral Service on 1300 135 070.

GLOSSARY

Average length of stay	<p>Average number of days each guest stayed during the reference period. It is a derived item calculated by dividing the number of guest nights occupied by the number of guest arrivals with the result expressed as a number of days,</p> $\text{Average length of stay(days)} = \frac{\text{Guest nights occupied}}{\text{Guest arrivals}}$
Average takings per available room night	<p>The takings from accommodation divided by the total number of room nights available for the survey period,</p> $\text{Average takings per available room night(\$)} = \frac{\text{Takings from accommodation}}{\text{Room nights available}}$
Average takings per room night occupied	<p>The takings from accommodation divided by the total number of room nights occupied for the survey period,</p> $\text{Average takings per room night occupied(\$)} = \frac{\text{Takings from accommodation}}{\text{Room nights occupied}}$
Bed occupancy rate	<p>The bed occupancy rate represents bed occupancy expressed as a percentage of total capacity available during the survey period,</p> $\text{Bed occupancy rate (\%)} = \frac{\text{Guest nights occupied}}{\text{Guest nights available}} * 100$
Bed spaces	<p>The maximum number of bed spaces normally in place available to accommodate paying guests during the survey period. Three-quarter beds are counted as one bed space; double beds as two bed spaces. Cots and divans not normally used as beds are excluded.</p>
Cabins, flats, units and villas	<p>The maximum number of cabins, flats, units and villas available at caravan parks for accommodating paying guests during the survey period.</p>
Capacity	<p>Capacity in terms of rooms/units/apartments/suites, visitor hostel bed spaces, holiday flats/units/houses or caravan park sites is the maximum number available to accommodate paying guests on the last day of the survey period. Capacity closed temporarily for seasonal reasons is included.</p>
Caravan park sites	<p>The measure of total caravan park capacity available for accommodating paying guests during the survey period. Includes on-site vans, other powered sites, unpowered sites and cabins, flats, units and villas.</p>
Caravan parks	<p>Establishments with 40 or more powered sites and cabins, flats, units and villas which provide either short-term or long-term accommodation to the general public and which provide powered sites for caravans and toilet, shower and laundry facilities for guests.</p>
Caravan parks, long-term	<p>Caravan parks where the majority of paying guests occupied sites for periods of two months or more.</p>
Caravan parks, short-term	<p>Caravan parks where the majority of paying guests occupied sites for periods of less than two months.</p>
Establishments	<p>The number of licensed hotels and resorts, motels and guest houses, serviced apartments, caravan parks and visitor hostels within the scope of the survey which operated for any part of the survey period, or which closed temporarily for the quarter for seasonal reasons.</p>
Guest arrivals	<p>The total number of paying guests counted only on the first night they stayed at the accommodation establishment during the survey period.</p> <p>For holiday flats, units and houses this is the same as unit lettings.</p> <p>This data item is not collected for caravan parks.</p>
Guest nights available	<p>The total number of nights available to all paying guests during the survey period.</p> <p>This is derived from the number of bed spaces multiplied by the number of days for which they were available during the survey period. For establishments closing (other than for seasonal reasons) or opening during this period, operating periods only are included.</p>

GLOSSARY *continued*

Guest nights occupied	The total number of paying guests counted on each night they stayed at the accommodation establishment during the survey period.
Holiday flats, units and houses	The total number of holiday flats, units and houses (excluding establishments predominantly operated on a time-share basis) operated by letting entities (i.e. owners, managers or real estate agents) who have sole letting rights to at least 15 flats, units or houses for short-term letting. These flats, units or houses should be mainly self-contained in terms of cooking, bath (or shower) and toilet facilities and should not have breakfast available for guests. Data for holiday flats, units or houses include short-term owner operators as well as paying guest accommodation.
Hotels	See licensed hotels and resorts with facilities.
Letting entities	For holiday flats, units and houses, the number of owners, managers or real estate agents within the scope of the survey who operated for any part of the survey period.
Licensed hotels and resorts with facilities	Establishments with five or more rooms which are licensed to operate a public bar and which provide accommodation on a room/suite basis, with a bath/shower and toilet in most guest rooms, but which do not have full cooking facilities (i.e. hot plates and oven/microwave) in most guest rooms.
Motels, private hotels and guest houses with facilities	Establishments with five or more rooms which are not licensed to operate a public bar, and which provide accommodation on a room/suite basis, with a bath/shower and toilet in most guest rooms, but which do not have full cooking facilities (i.e. hot plates and oven/microwave) in most guest rooms.
Multiple bedroom holiday flats, units and houses	The total number of holiday flats, units and houses available with multiple bedrooms.
Occupancy	Occupancy in terms of room nights, unit nights or site nights occupied refers to the total number of nights each room, unit or caravan park was occupied during the survey period. Occupancy in terms of guest nights refers to the total number of paying guests counted on each night they stayed at the accommodation establishment during the survey period.
On-site vans	The maximum number of vans owned or leased by the establishment for the purpose of providing accommodation to the general public.
Other powered sites	The maximum number of sites with provision for connection to electric power supply, available at caravan parks for accommodating paying guests during the survey period, excluding powered sites occupied by on-site vans, and cabins, flats, units and villas.
Other sites permanently reserved	The total number of powered and unpowered sites, on-site vans and cabins, flats, units and villas continuously let for two months or more on the last day of the survey period to tenants who occupy the sites only on a casual or sporadic basis.
Persons employed	The total number of persons working at each accommodation establishment at the end of the survey period (including working proprietors and those working on other than accommodation activities). This data item is not applicable to holiday flats, units and houses let by real estate agents.
Room nights available	The number of rooms/units available multiplied by the number of days for which they were available during the survey period. For establishments closing (other than for seasonal reasons) or opening during this period, operating periods only are included.
Room nights occupied	The number of nights each guest room/unit was occupied by a paying guest during the survey period.
Room occupancy rate	The room occupancy rate represents room occupancy expressed as a percentage of total capacity available during the survey period, $\text{Room occupancy rate (\%)} = \frac{\text{Room nights occupied}}{\text{Room nights available}} * 100$

GLOSSARY *continued*

Room occupancy rate <i>continued</i>	providing that, for establishments closing (other than for seasonal reasons) or opening during the survey period, the denominator of the above expression includes only operating periods.
Rooms	The maximum number of rooms available for accommodating short-term paying guests at each licensed hotel and resort, motel and guest house and serviced apartment during the survey period. Units, apartments and suites are treated as rooms for these types of establishments in these survey results.
Serviced apartments	Establishments with five or more units which mostly comprise self-contained units at the same location, and which are available on a unit/apartment basis to the general public for a minimum of one night. The units should have full cooking facilities (i.e. hot plates and oven/microwave), refrigerator and bath/shower and toilet facilities; all bed linen and towels should be provided, and daily servicing (i.e. cleaning and bed making) must be available through the on-site management, although this service may not necessarily be used.
Single bedroom holiday flats, units and houses	The total number of holiday flats, units and houses available with a single bedroom.
Site nights available	The number of caravan park sites available multiplied by the number of days for which they were available during the survey period. For establishments closing (other than for seasonal reasons) or opening during this period, operating periods only are included.
Site nights occupied	The total number of nights each caravan park site was occupied during the survey period.
Site occupancy rate	<p>The site occupancy rate for caravan parks represents site occupancy expressed as a percentage of total capacity available during the survey period,</p> $\text{Site occupancy rate (\%)} = \frac{\text{Site nights occupied}}{\text{Site nights available}} * 100$ <p>providing that, for establishments closing (other than for seasonal reasons) or opening during the survey period, the denominator of the above expression includes only operating periods.</p>
Sites occupied by long-term guests	The total number of caravan park sites occupied on the last day at the end of the survey period by guests who have stayed continuously for two months or more.
Star grading	<p>The grading of hotels, motels and guest houses with facilities and serviced apartments is based on the classification system owned by AAA Tourism Pty Ltd. The gradings are allocated according to a points system based on the amenities and facilities available to guests. Details of the grading scheme are contained in the publication <i>Accommodation Guide</i> published by AAA Tourism Pty Ltd for each of the individual Australian Motoring Organisations. For the purpose of classifying establishments to a star grading in this publication, 'half' star gradings are ignored (e.g. a two and a half star grading has been shown as two star).</p> <p>While coverage has significantly improved, some establishments (including some competing in the four and five star markets and having significant takings) still remain outside the star grading scheme. These establishments have been given a star grading of 'ungraded'.</p>
Takings from accommodation	<p>Since 1 July 2000, takings from accommodation include gross revenue from the provision of accommodation, including GST. Takings from meals are excluded. In cases where takings from accommodation data cannot be provided inclusive of GST the amount of GST payable is estimated and the data revised accordingly.</p> <p>Takings from accommodation for each month generally represent the takings received during that month. Where payments are received in advance of, or after the provision of accommodation to guests, the monthly figure for takings from accommodation may not necessarily bear a direct relationship to the number of guests accommodated during the month.</p>

GLOSSARY *continued*

Unit lettings	The total number of times a holiday flat, unit or house was occupied by a new tenant, counted only on the first night it was occupied by the new tenant. This is the equivalent of guest arrivals.
Unit nights available	The number of holiday flats, units and houses available multiplied by the number of days for which they were available during the survey period. For establishments closing (other than for seasonal reasons) or opening during this period, operating periods only are included.
Unit nights occupied	The total number of nights each holiday flat, unit or house was occupied during the survey period.
Unit occupancy rate	<p>The unit occupancy rate for holiday flats, units and houses represents unit occupancy expressed as a percentage of total capacity available during the survey period,</p> $\text{Unit occupancy rate (\%)} = \frac{\text{Unit nights occupied}}{\text{Unit nights available}} * 100$ <p>providing that, for letting entities closing (other than for seasonal reasons) or opening during the survey period, the denominator of the above expression includes only operating periods.</p>
Unpowered sites	The maximum number of sites with no provision for connection to electric power supply, available at caravan parks for accommodating paying guests during the survey period.
Visitor hostels	Establishments with 25 or more bed spaces which provide accommodation to visitors on a bed basis (rather than by room). This category does not include establishments providing charity type accommodation (e.g. Salvation Army hostels) nor hotels, motels and guest houses without in-room facilities which provide accommodation on a per room basis.

FOR MORE INFORMATION . . .

INTERNET **www.abs.gov.au** the ABS web site is the best place for data from our publications and information about the ABS.

LIBRARY A range of ABS publications are available from public and tertiary libraries Australia wide. Contact your nearest library to determine whether it has the ABS statistics you require, or visit our web site for a list of libraries.

INFORMATION AND REFERRAL SERVICE

Our consultants can help you access the full range of information published by the ABS that is available free of charge from our web site, or purchase a hard copy publication. Information tailored to your needs can also be requested as a 'user pays' service. Specialists are on hand to help you with analytical or methodological advice.

PHONE 1300 135 070

EMAIL client.services@abs.gov.au

FAX 1300 135 211

POST Client Services, ABS, GPO Box 796, Sydney NSW 2001

FREE ACCESS TO STATISTICS

All statistics on the ABS web site can be downloaded free of charge.

WEB ADDRESS www.abs.gov.au



2863500003074

ISSN 1031 0770

RRP \$31.00